

NW 1/4 SEC. 21 T.2S. R.2E. W.M.
 CLACKAMAS COUNTY

1" = 200'

D.L.C.
 FENDAL C. CASON NO. 50

2 2E 21B

CANCELLED NOS.
 T.L. 2700
 T.L. 2800
 T.L. 2900
 T.L. 3000
 T.L. 3100

RECEIVED
 JAN 12 1973
 STATE ENGINEER
 SALEM, OREGON

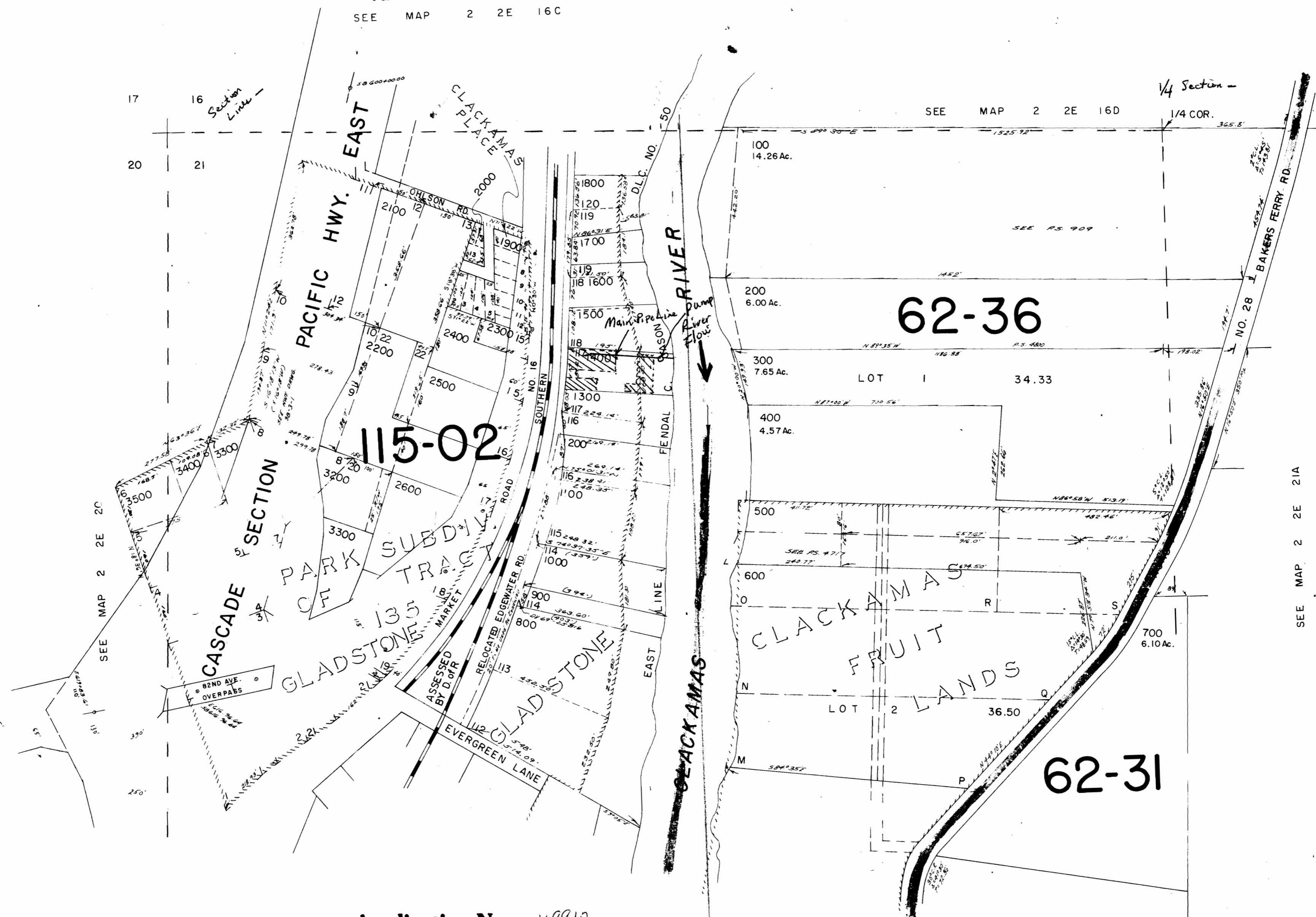
RECEIVED
 DEC 27 1972
 STATE ENGINEER
 SALEM, OREGON

344.63' S. 1122.97' E
 of S.W. Cor. Isom Crawford
 D.L.C. No. 497
 S.B. 497.50

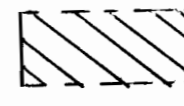
SEE MAP 2 2E 16C

SEE MAP 2 2E 16D

1/4 Section -
 1/4 COR.



Application No. 49910
 Permit No. 37588

 Area to be Irrigated. 725 Edgewater Road Gladstone, Ore 97027

SEE MAP 2 2E 21C

2 2E 21B