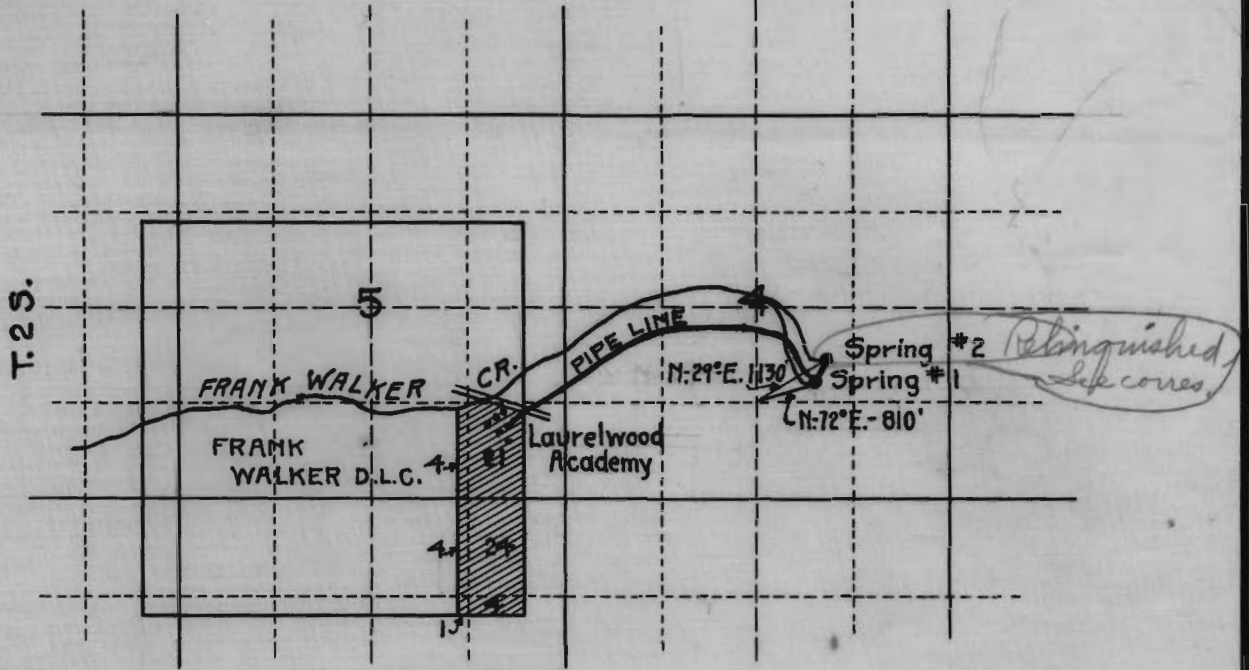
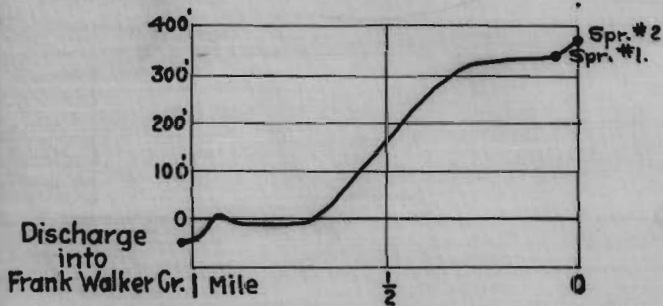


R. 3 W.



MAP  
SCALE 2" = 1 M.



APPROXIMATE PROFILE OF PIPE LINE  
Datum - floor of office at Academy

DAMS to be earth fill, less than 5' in height.  
WASTEWAYS to be plank flumes about 2' x 1'.

OFFICE OF STATE ENGINEER  
RECEIVED  
MAR 2 1917  
SALEM, OREGON

Application No. 5375  
Permit No. 5375  
3772

MAP & PROFILE

TO ACCOMPANY APPLICATION FOR PERMIT  
TO APPROPRIATE WATER FROM SPRINGS  
AT THE HEAD OF FRANK WALKER CR.

WASHINGTON COUNTY, ORE

FEB. 8, 1917

BAAR AND CUNNINGHAM  
ENGINEERS  
PORTLAND OREGON