

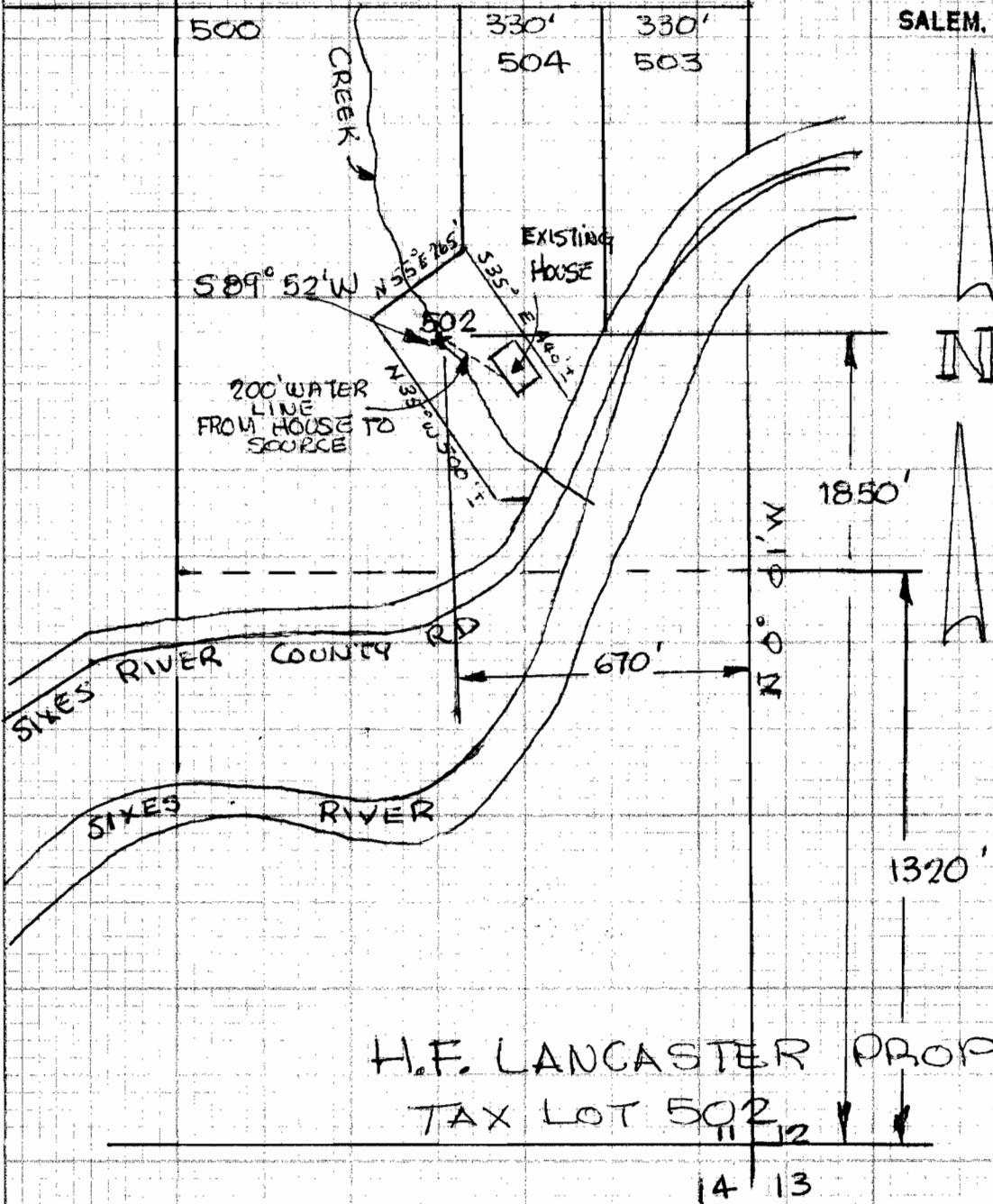
SECTION 11 T32S R15W W.M.
CURRY COUNTY

SCALE: 1" = 400'

RECEIVED

DEC 4 1974

STATE ENGINEER
SALEM, OREGON



Application No. 52343
Permit No. 37122

K&E 10 X 10 TO THE INCH 46 0782
7 X 10 INCHES
KEUFFEL & ESSER CO