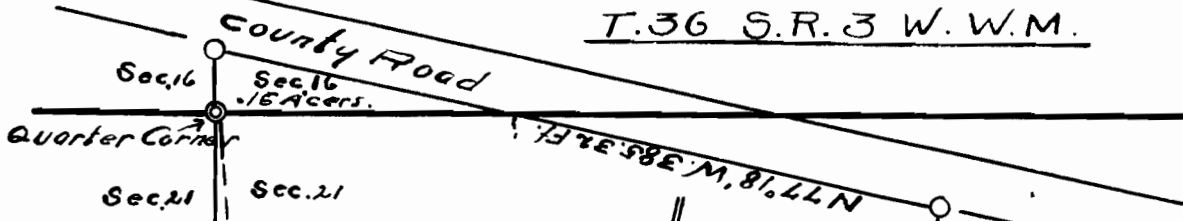


T.36 S.R.3 W.W.M.



4.84 Acres

S 72° 26' E. 572.6 FT

S 59° 30' E. 760 FT. FROM QUARTER CORNER TO INTERSECTION OF INTAKE

Ditch

N 12° 42' E. 707.18 FT.

Tank 3000 gal.

Discharge

Residence

Location of centrifugal Pump & Motor

S 77° 18' E. 224.94 FT.

Intake

W

Rogue River

E

No. 6053  
3777

APR 1918

PROPERTY—MAP

G. H. PATPICK.

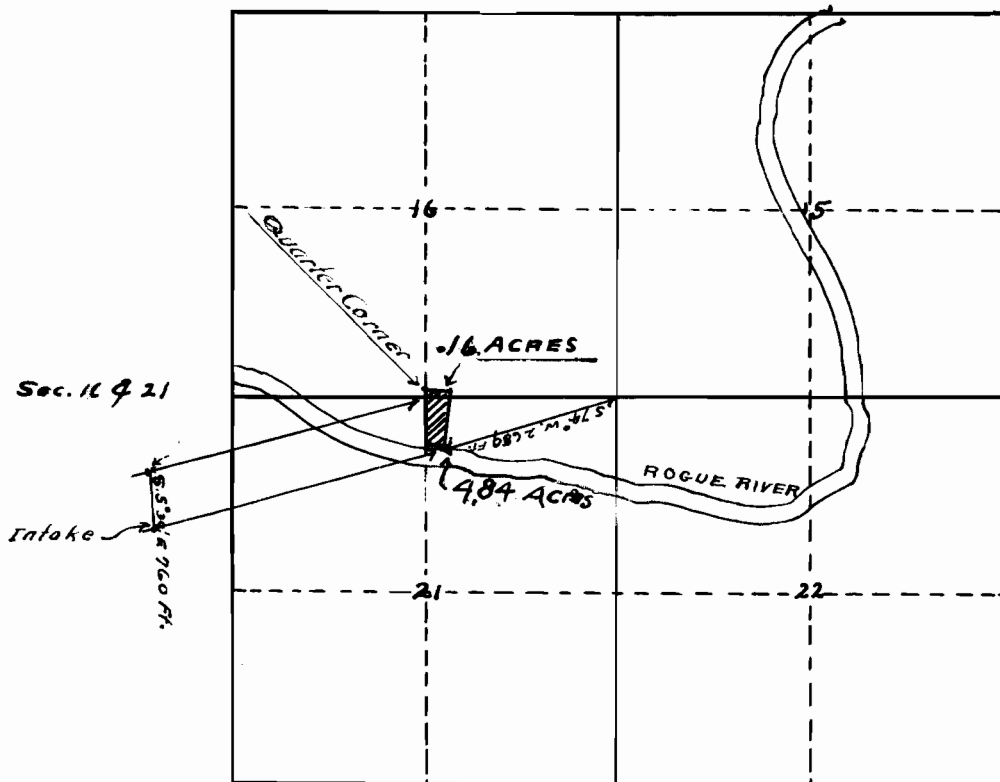
GOLD HILL, ORE.

2-25-18 GYM

# Map Showing location of the G.H. Patrick property

T. 36 S.R. 3 W. W.M.

Gold Hill, Ore.



I, C.W. Martin, of Jackson County, Ore.  
do hereby certify that this map was made  
from notes taken during an actual survey  
made by me on Jan. 24, 1918, and that it  
correctly represents the works described in  
the accompanying application, together with the  
location of streams and other ditches in the  
immediate vicinity.

C.W. Martin.

PLANNING STATE ENGINEER

REGISTERED

APR 19 1918

SEAL

Map No. 605-3  
3777