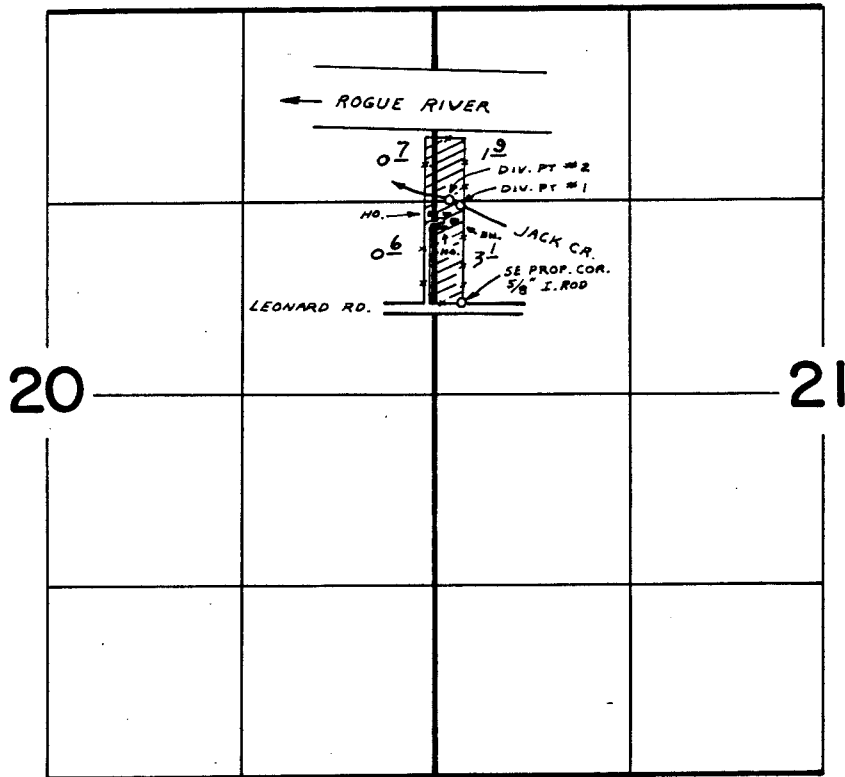


T. 36 S., R. 6 W., W.M.



DIV. PT. #1 : 1300' N. & 170' E. FROM W 1/4 COR. SEC. 21
DIV. PT. #2 : 1340' N. & 100' E. FROM W 1/4 COR. SEC. 21

RECEIVED

OCT 1 1981

WM. DIST. 14
GRANTS PASS. ORE.

FINAL PROOF SURVEY
UNDER

Application No. 50448 Permit No. 38103 SUPPL.
IN NAME OF

WILLIAM E. ANDERSON

Surveyed JUN. 28 1978 by B. SUND

P.T.S. - 1978 - 14 - A