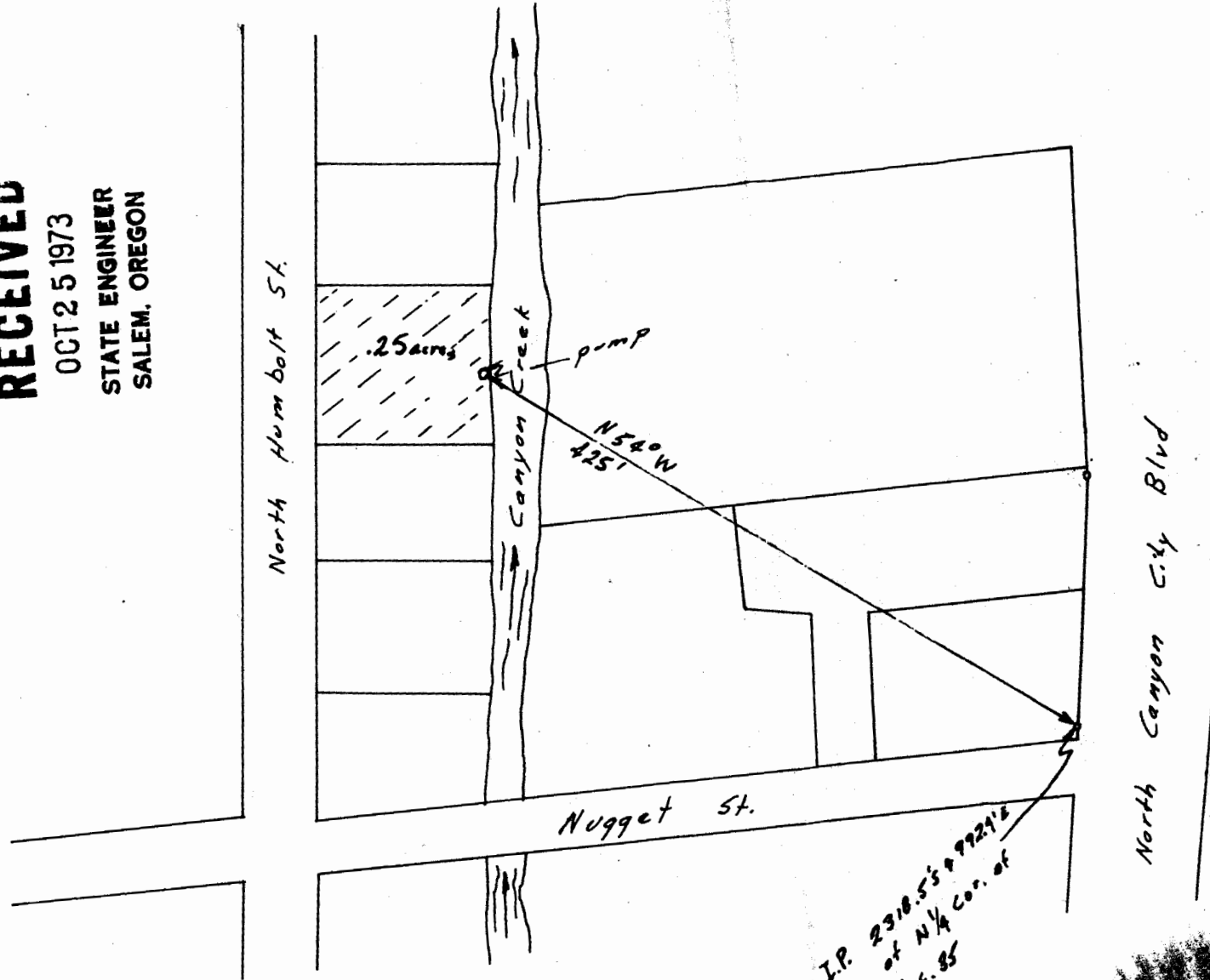


RECEIVED
JUN 13 1973
STATE ENGINEER
SALEM, OREGON

RECEIVED
OCT 25 1973
STATE ENGINEER
SALEM, OREGON

SW NE ~~Sec. 85~~ T. 13 S. R. 31 E. W.M.



Scale 1" = 100'

Water right map for
Gail L. Dieker for irrigation
from Canyon Creek.

Map traced from tax lot
map 13 31 35 AC

Application No. 50686
Permit No.