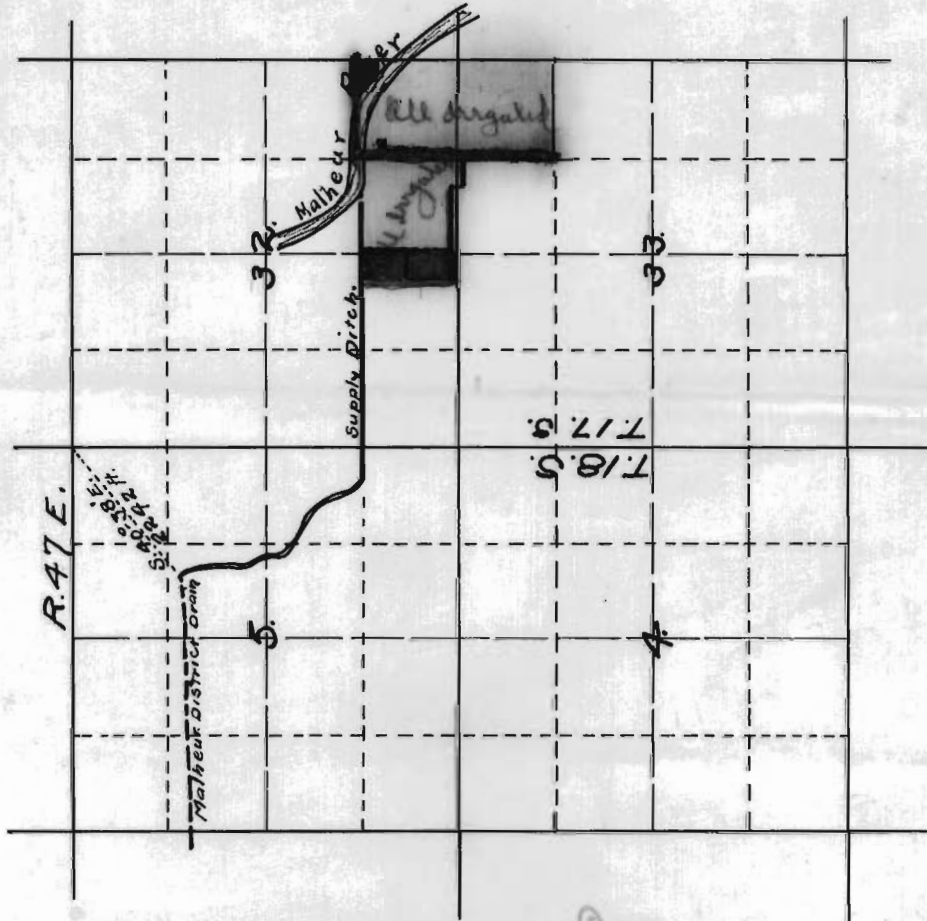


2000



Map to accompany application
for permit to appropriate water
from Malheur District Drain
by T.J. Brosnan and Joseph Colley.
Survey and Map
by
C. H. Smith
Ontario, Oregon
May 9th 1918
Scale. 1" = 1 MILE.

RECEIVED
MAY 13 1918
SALEM, OREGON

Application No. 6065
Permit No. 3829

2000

2002

Map to accompany application
for permit to appropriate water
from Malheur District Drain
by T.J. Brosnan and Joseph Colley.

Survey and Map

by
C. H. Smith

Ontario, Oregon

May 9th 1918

Scale: 8 IN = 1 MILE.

OFFICE OF STATE ENGINEER

RECEIVED

MAY 13 1918

SALEM, OREGON

Application No. 6065

Permit No. 3829



2002