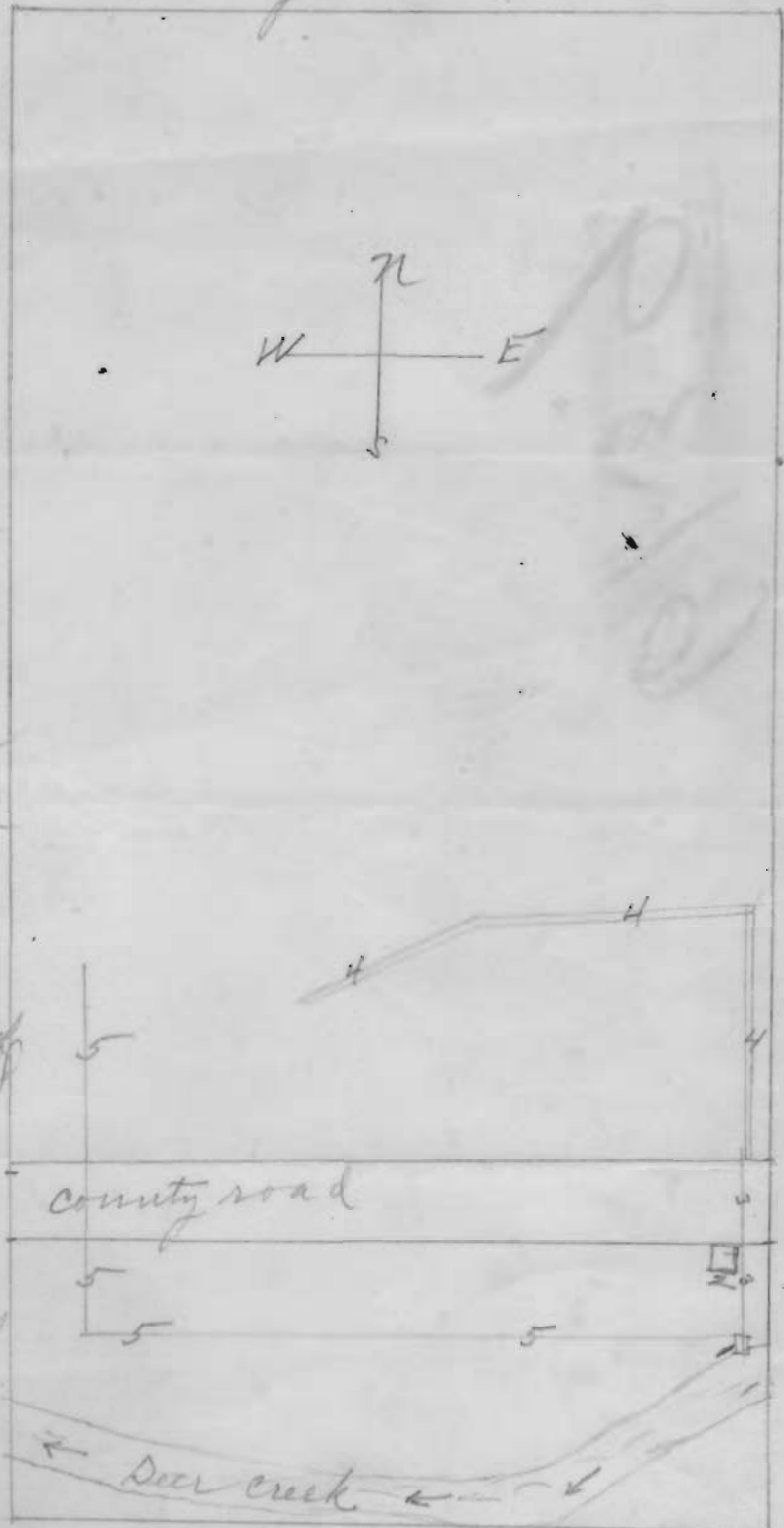


Plot of Block 8 - 3rd block side adu to Roseburg Ore
 located in N.E. 1/4 NE 1/4 Sec 20 - T7 27 R5. Douglas Co Ore
 contains approximately 20 acres.

county road.

- 1 Point water is taken from Deer creek also location of pumping plant
- 2 Thirty foot tower holding 6' x 8" Tank.
- 3 2" pipe line leading from pump to tower and flume. This will be extended to upper, or north, side of place when that is put under irrigation
- 4 Flume following a ridge from which the water will be silted both ways.
- 5 Pipe line from which water will be distributed with a large hose.



OFFICE OF STATE ENGINEER

RECEIVED

JUL 5 1918

SALEM, OREGON

Application No. 6139
 Permit No. 3838