

SECTION 22 T.4S. R.4W. W.M.

4 4 22

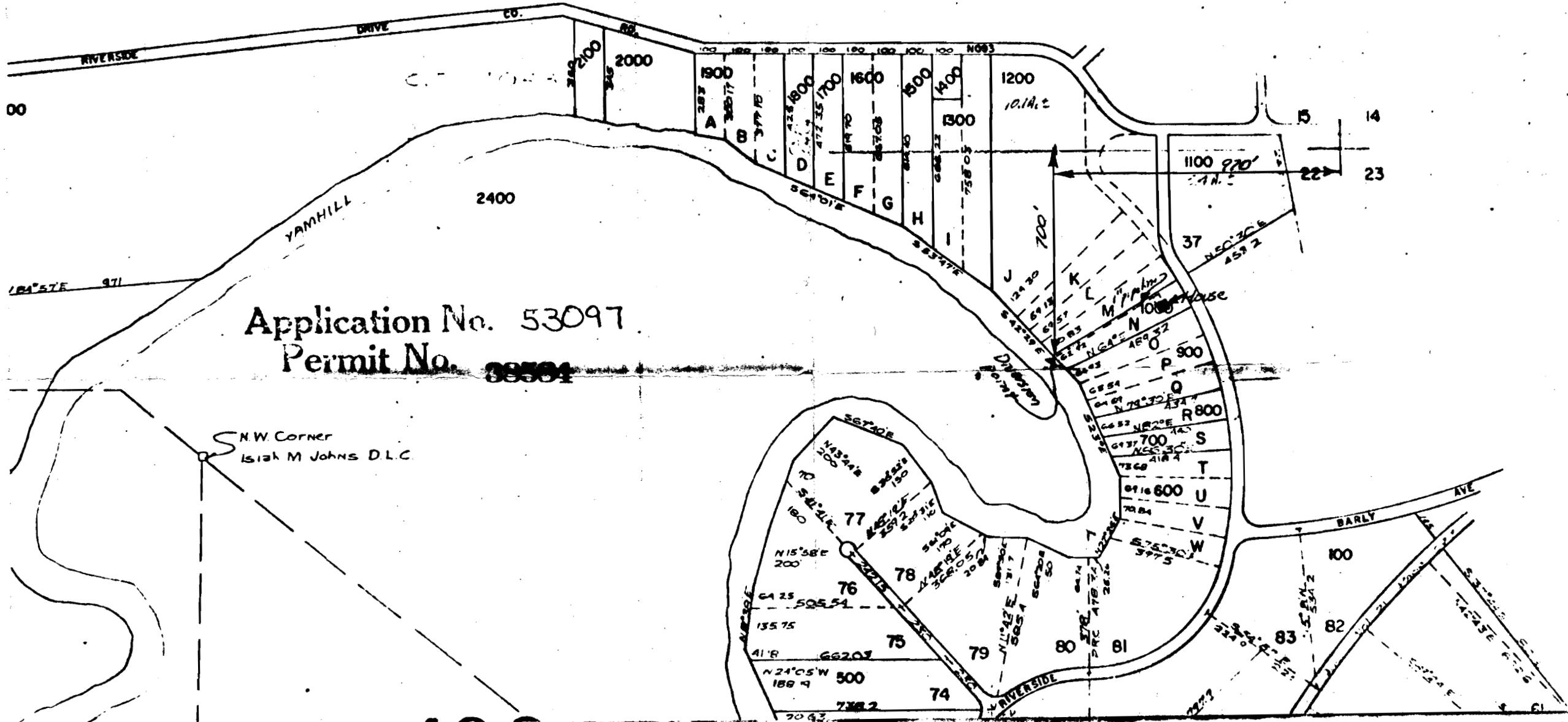
YAMHILL COUNTY

RECEIVED
MAY 8 1975
STATE ENGINEER
SALEM, OREGON

246

1" = 400'

SEE SEC. 4 4 15



Application No. 53097
Permit No. 88581

N.W. CORNER
Isiah M. Johns D.L.C.