

SEC. 17 T6SR7WWM

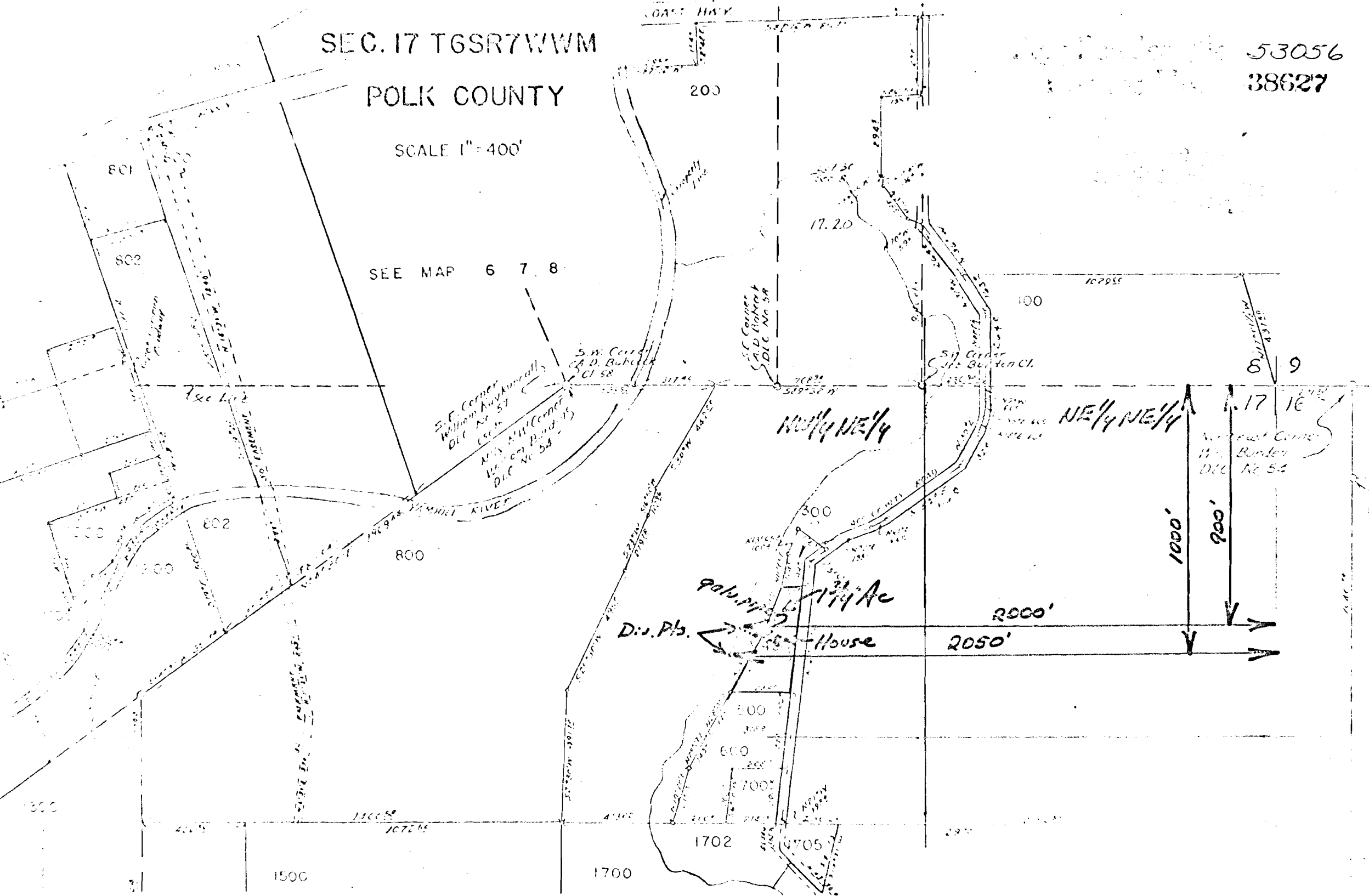
POLK COUNTY

SCALE 1" = 400'

SEE MAP 6 7 8

53056

38627



COAST HWY

200

17.20

801

802

SEE MAP 6 7 8

100

8 9

S.E. Corner  
William A. Kunkinall  
D.L.C. No. 57

S.W. Corner  
A. D. Baker  
D.L.C. No. 58

N.W. 1/4 Corner  
Wm. Borden  
D.L.C. No. 54

S.E. Corner  
A. D. Baker  
D.L.C. No. 58

S.W. Corner  
Wm. Borden  
D.L.C. No. 54

NE 1/4 NE 1/4

Northwest Corner  
Wm. Borden  
D.L.C. No. 54

900' x 114' Ac

House

Dis. Pls.

2000'  
2050'

1000'  
900'

1702

1705

1500

1700