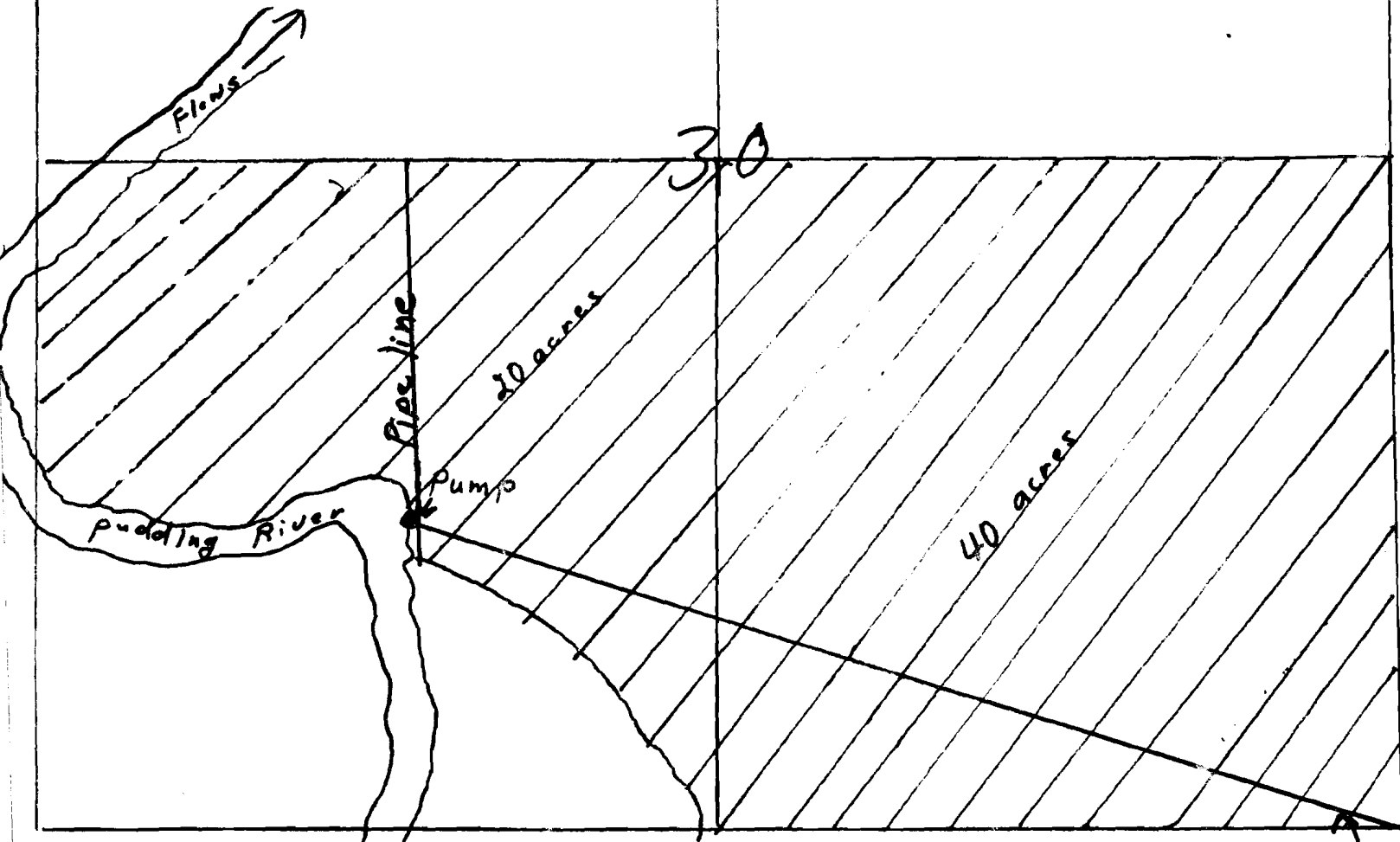


Map is on scale of
eight inches to $\frac{1}{2}$ mile

property Lies in The
SE $\frac{1}{2}$ of The S.E. quarter of
Section 30.

T.35. R.1E.



RECEIVED

STATE ENGINEER
SALEM OFFICE

RECEIVED

STATE ENGINEER
SALEM OFFICE

Application No. 51822
Permit No. 39026

Pump is located
645 ft. N.
2199 ft W. of
SE Corner of
Section 30
T.35. R.1E.