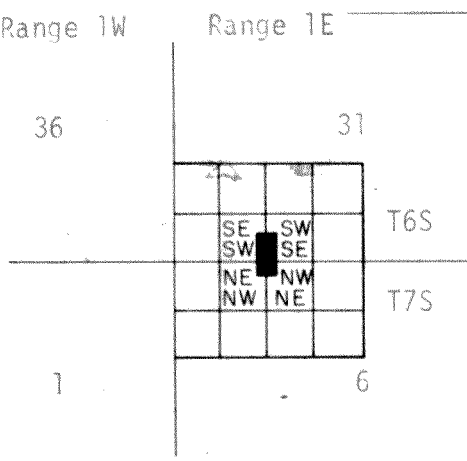
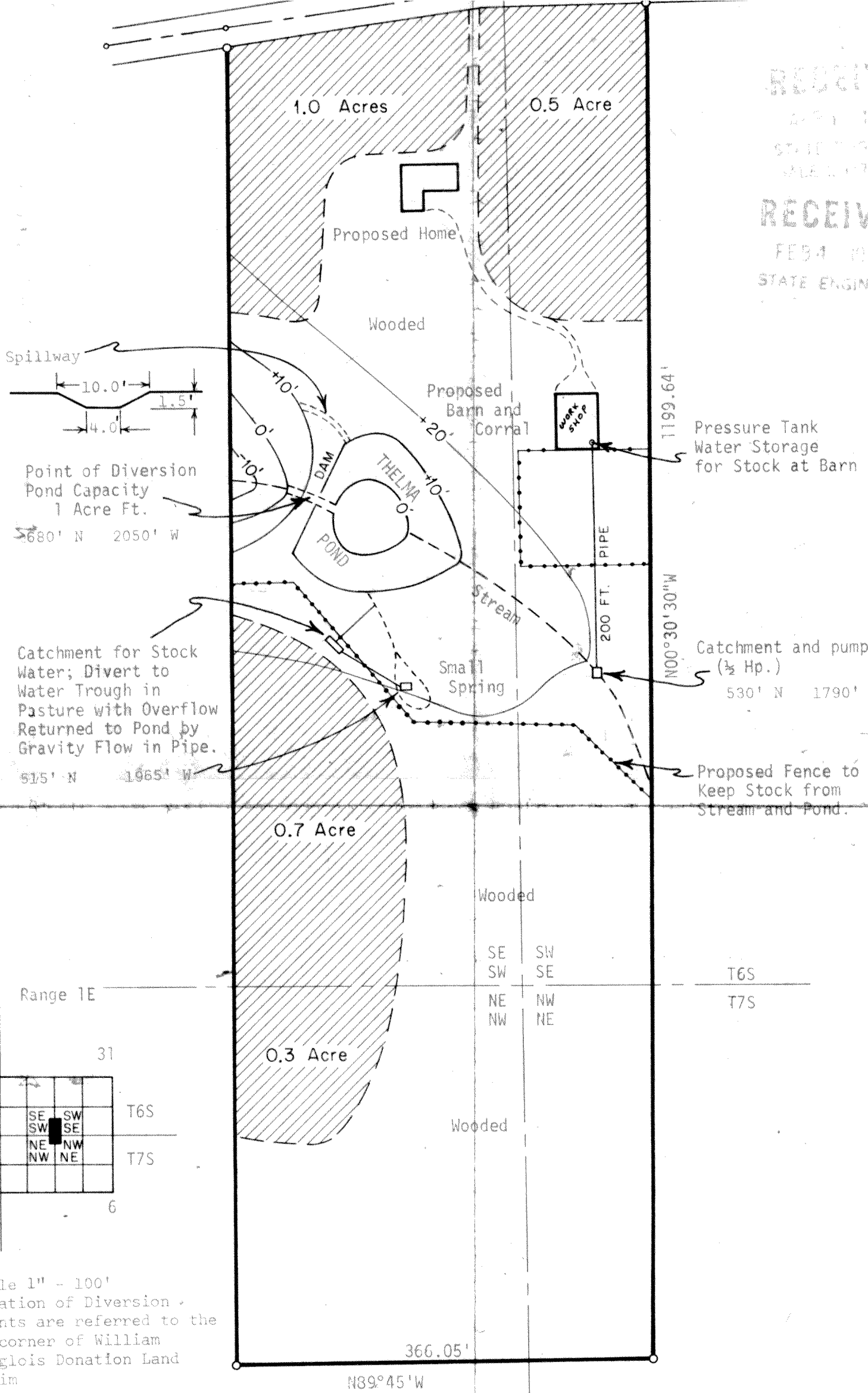


RECEIVED

FEB 11 1915
STATE ENGINEER
SALT LAKE CITY

RECEIVED

FEB 11 1915
STATE ENGINEER



1. Scale 1" = 100'
2. Location of Diversion points are referred to the SE corner of William Langlois Donation Land Claim

County Road No. 666

RECEIVED

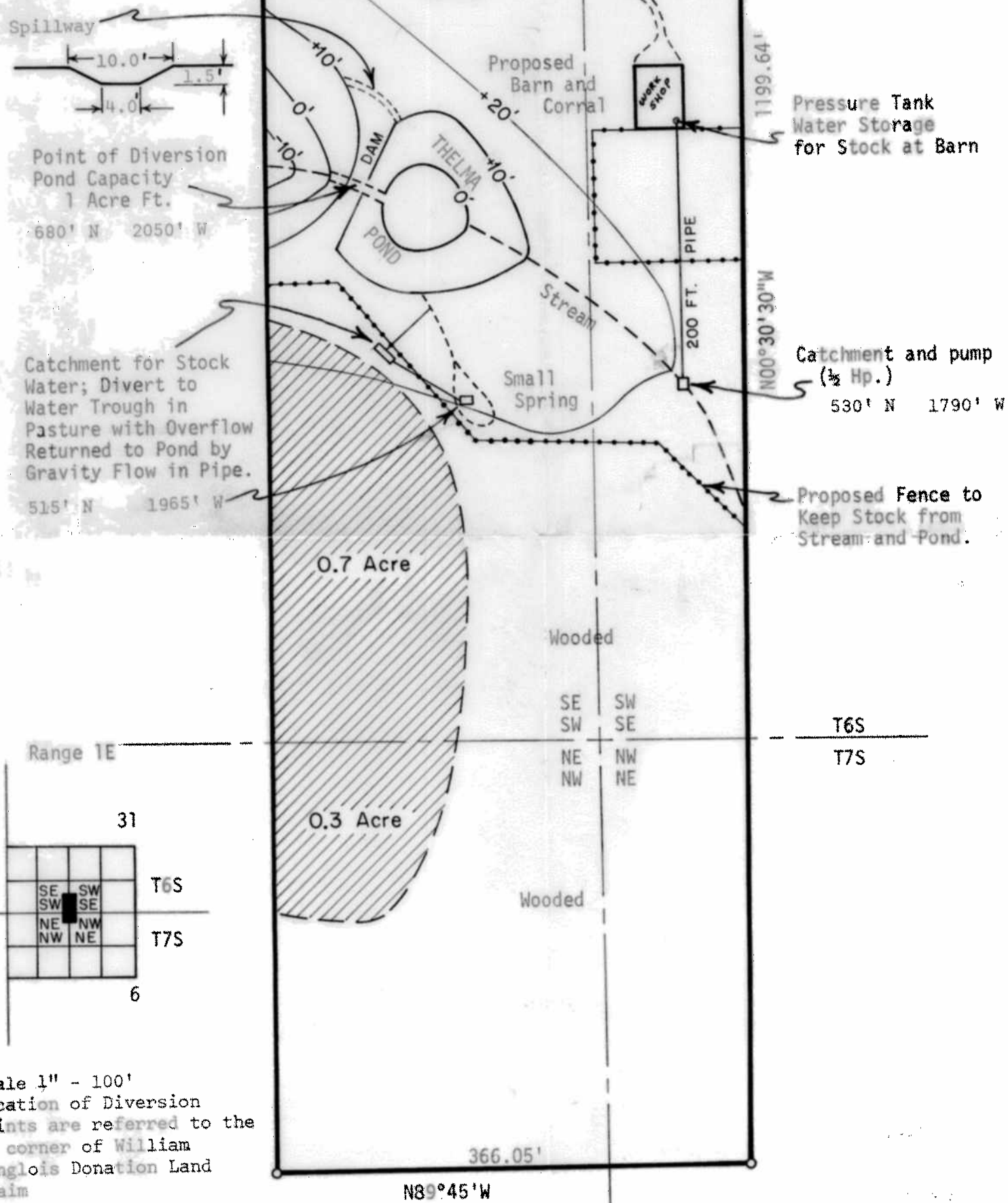
APR 1 1975

STATE ENGINEER
SALEM, OREGON

RECEIVED

FEB 4 1975

STATE ENGINEER
SALEM, OREGON



Application No. R-52756 + 52757
Permit No. R 6260 39170