

Permit: S 39546  
Volume: 7  
Strm: MURPHY CR  
Trib: APPLGATE R  
Priority: 6/24/75

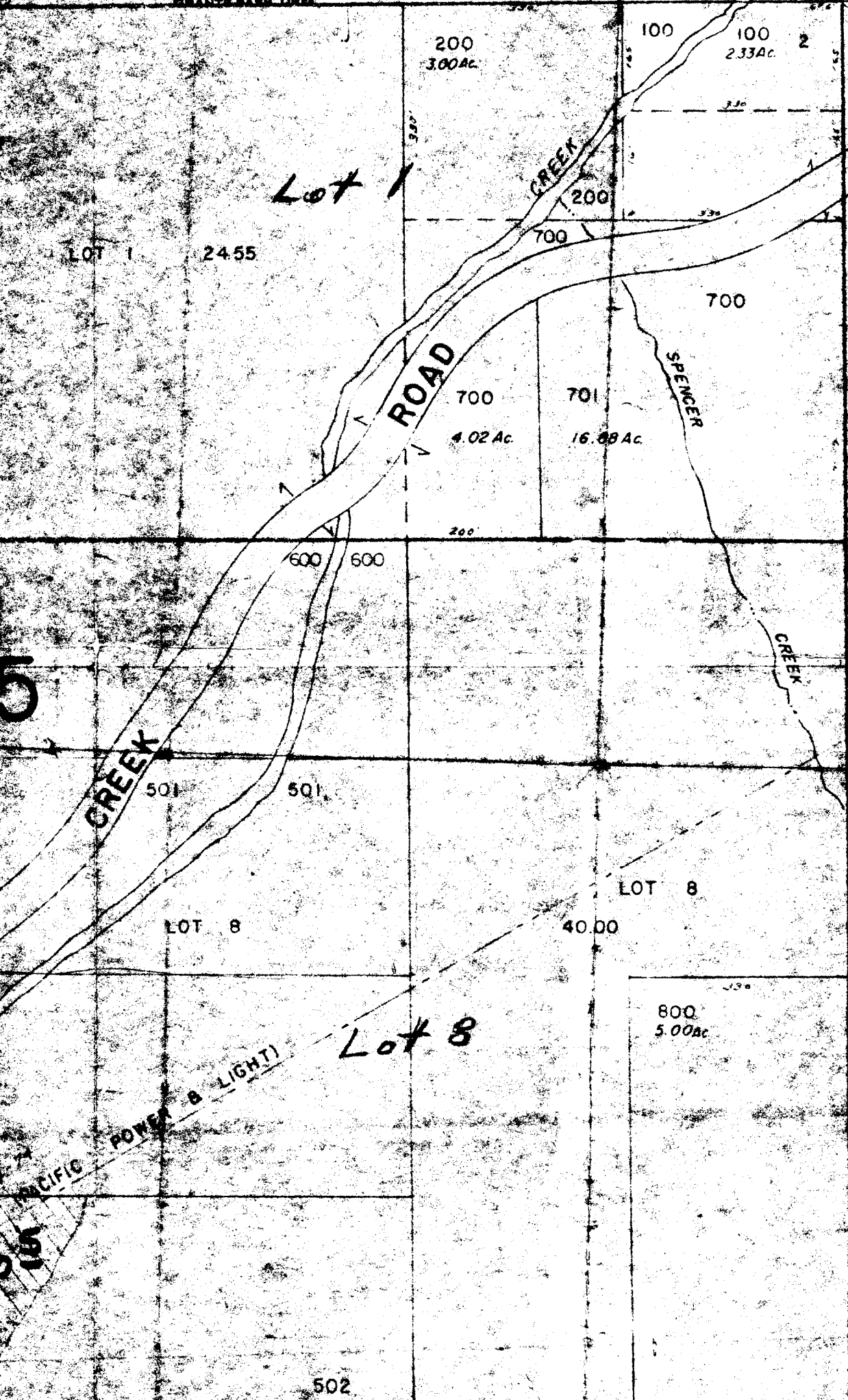
Application No. 53296  
Permit No. 39516

RECEIVED  
JUN 15 1976

38-6-2

IWM-DIST. 14  
FRANKS PASS ORE

CANCELLED  
TL 900



SEE MAP 38-6

RECEIVED  
JUN 24 1975

STATE ENGINEER  
SALMON DIVISION

SEP - 3 1975  
SALMON DIVISION

STATE ENGINEER  
SALMON DIVISION

PACIFIC POWER & LIGHT

JOSEPHINE COUNTY

1" = 200'

Application No.  
Permit No.

SEE MAP 37 6

1/4 COR.

300  
30.07 Ac

*Lot 2*

LOT 2

24.13

LOT 1

600  
9.45 Ac

5

501  
9.33 Ac

C.S. 18-74

*Lot 7*

LOT 7

40.00

LOT 7

500  
9.38 Ac

MURPHY

400  
7.02 Ac

502  
9.41 Ac

54-74  
PACIFIC POWER

MURPHY

C.S. 18-74

30

15

976

RECEIVED

JUN 15 1976

WM-DIST. 14  
BRANTS PASS, ORE.

30

35 36

CANCELLED  
TL 900

Lot 1

LOT 1 24.55

ROAD

CREEK

SPENCER  
CREEK

CREEK

LOT 8

LOT 8

40.00

800  
5.00Ac

Lot 8

PACIFIC POWER & LIGHT

RECEIVED

JUN 24 1975

STATE ENGINEER  
SALEM, OREGON

SEP - 3 1975

STATE ENGINEER  
SALEM, OREGON

502

Lot 9

SEE MAP 38 6

5

5

6

174 COR.

300  
30.07Ac

Lot 2

LOT 2

24.13

LOT 1

600  
9.43Ac

5

501  
9.33 Ac

6-5-74

Lot 7

LOT 7

40.00

LOT 7

500  
9.38 Ac

MURPHY

400  
9.00Ac

502  
9.41 Ac

5-7-74  
PACIFIC POWER

MURPHY

CO

10

970

CREEK

SEE MAP 38 6

40

Lot 10