

1" = 100'

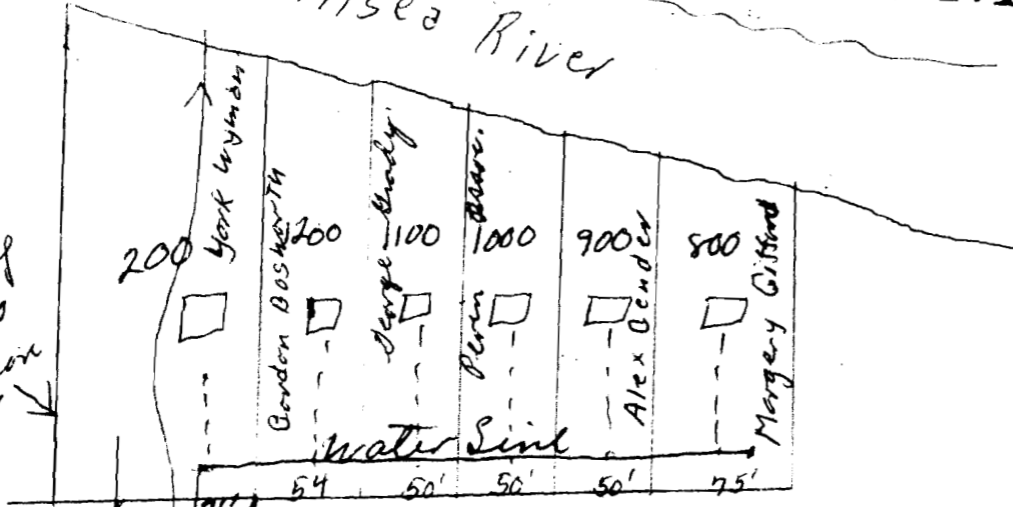
SW 1/4 NW 1/4 Section 26 T135 R11W W60
Lincoln County Oregon

RECEIVED
JUN 28 1975
STATE ENGINEER
SALEM, OREGON

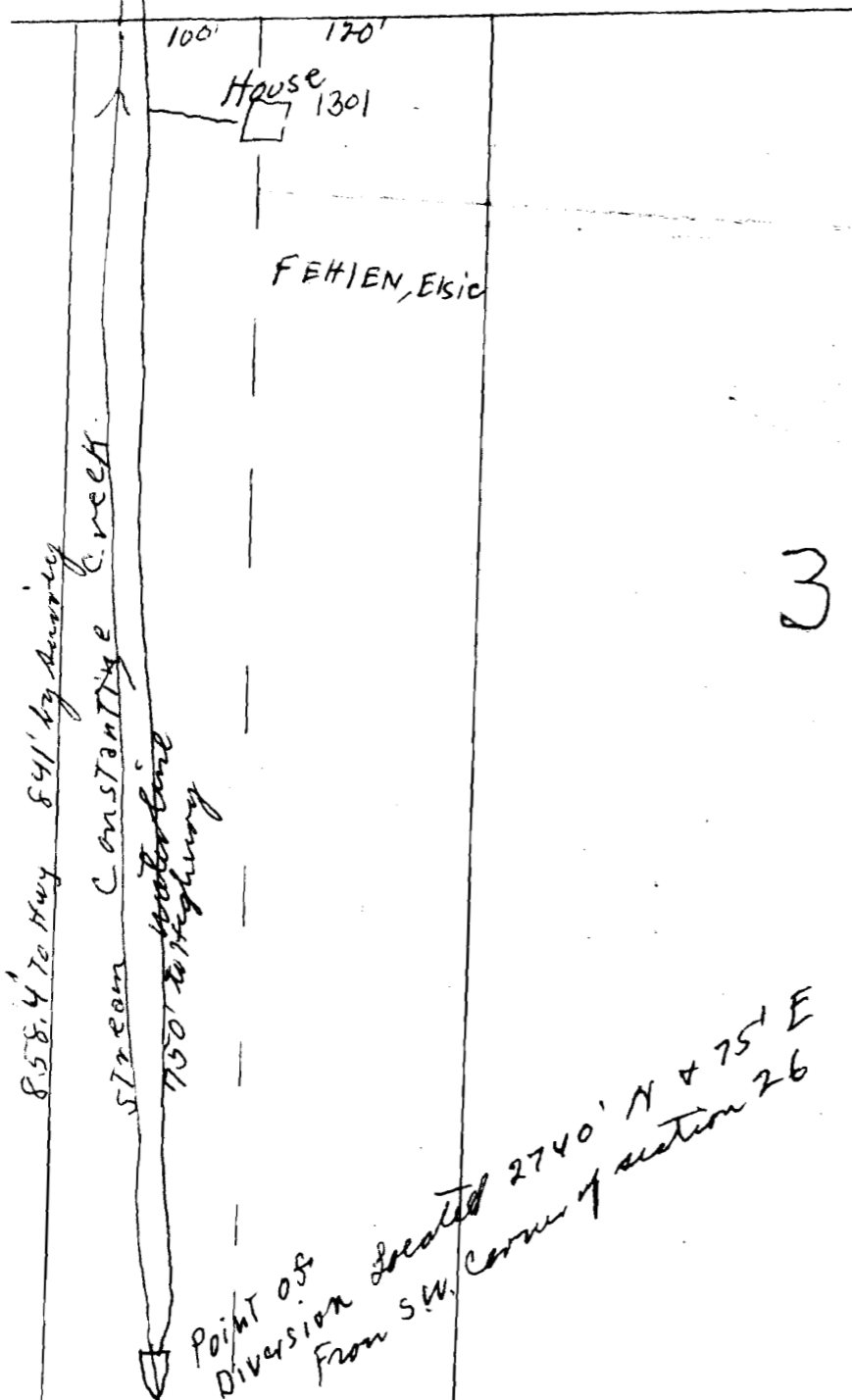
Application No. 53329 Section 26 Water association
Permit No. 39571

Aisea River

Portion of
total 200
in Section
27



Aisea Hwy 34



3 3 1

26

1/4 Cor