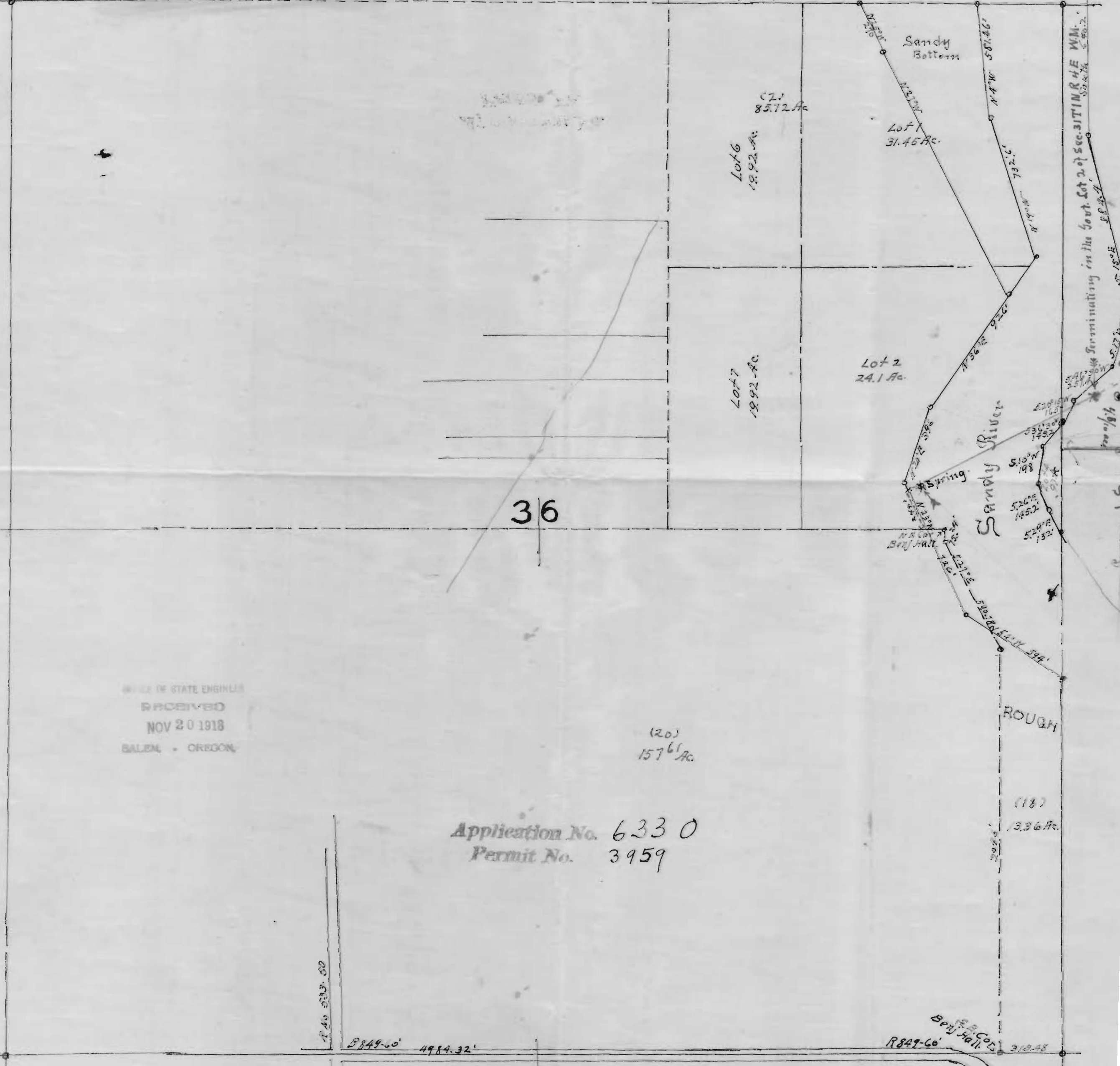


Map showing location of the Spring  
appropriated.  
by  
O. K. Enebo.



Sec. 36. T1N. R3E.  
Scale 400 feet to an inch  
Multnomah Co. Ore.



OFFICE OF STATE ENGINEER  
RECEIVED  
NOV 20 1918  
SALEM, OREGON

Application No. 6330  
Permit No. 3959

140 533.50

8849.60 4984.32

Benj. Hall  
R849-60 318.48

P330