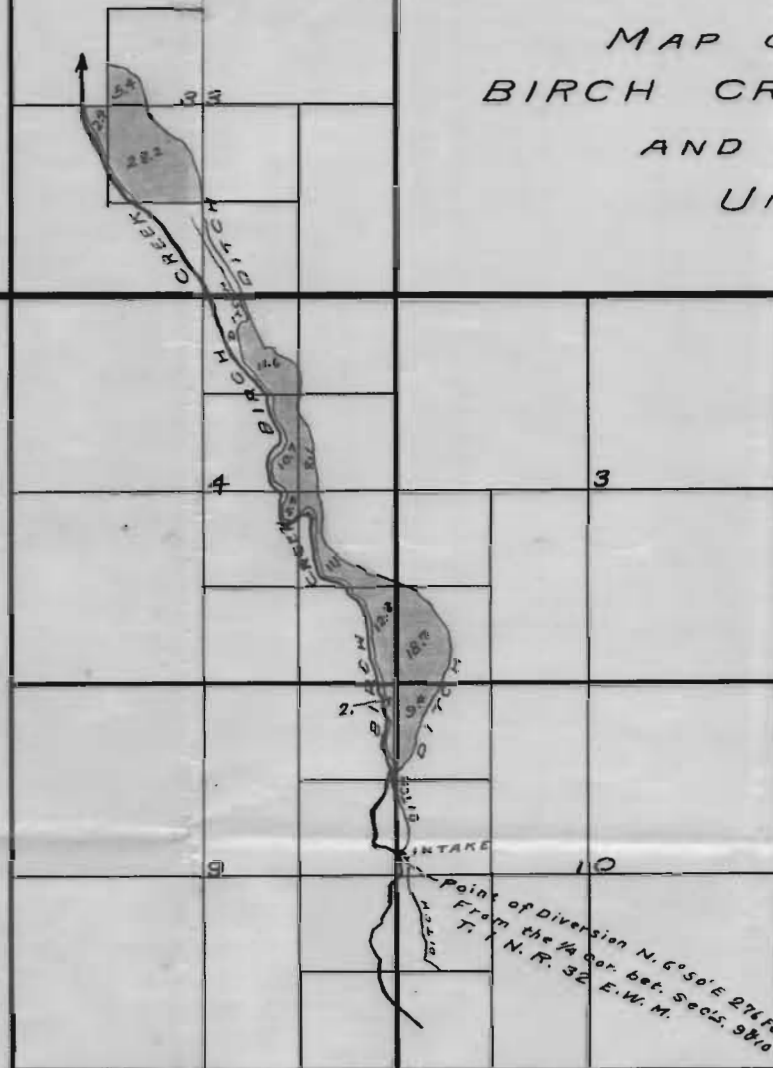


MAP OF THE DITCH OF THE  
BIRCH CREEK DITCH COMPANY  
AND IRRIGABLE LANDS  
UMATILLA Co. Oo.

T. 2 N. R. 32 E. W.M.

T. 1 N. R. 32 E. W.M.



App 850  
Per 396

Scale 40 Chs. = 1 Inch

STATE OF OREGON } ss.  
COUNTY OF UMATILLA }

I Geary Kimbrell, of Pendleton Oregon do hereby certify that this map was made from notes taken during an actual survey made by me on the 15 day of June 1910 and that it correctly represents the works described in the accompanying application, together with the location of streams and other ditches in the immediate vicinity and has written thereon the area in each smallest legal subdivision which it is proposed to irrigate.

*Geary Kimbrell*  
SURVEYOR

820