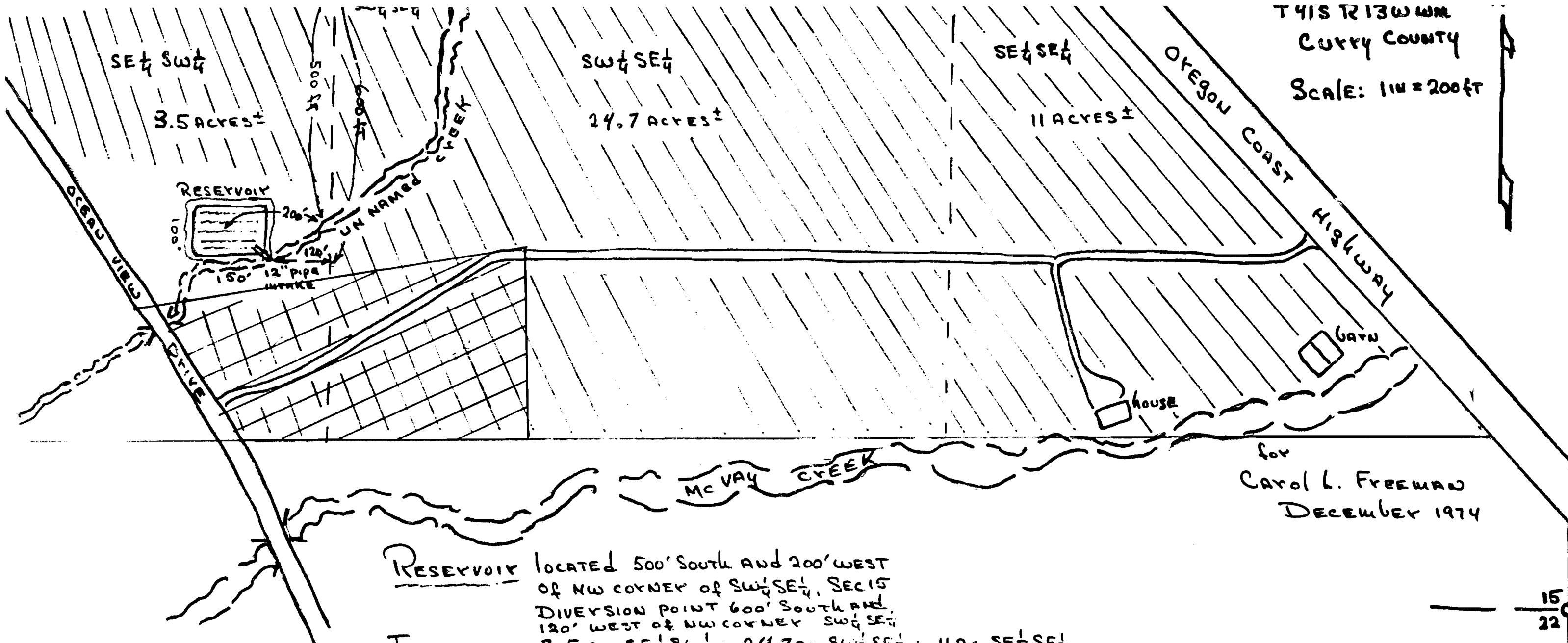


T 41S R 13W W 4  
 CURRY COUNTY  
 SCALE: 1" = 200 FT

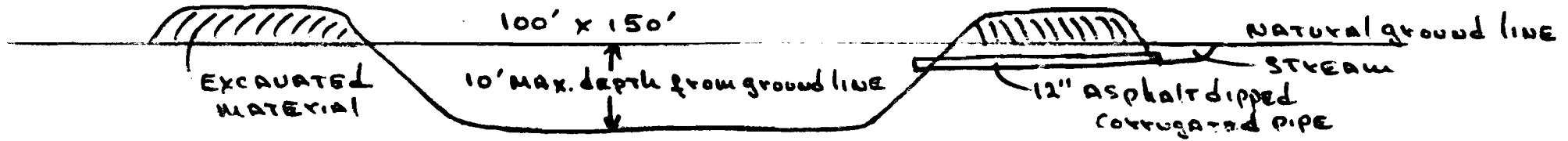


for  
 CAROL L. FREEMAN  
 DECEMBER 1974

RESERVOIR LOCATED 500' SOUTH AND 200' WEST  
 OF NW CORNER OF SW 1/4 SE 1/4, SEC 15  
 DIVERSION POINT 600' SOUTH AND  
 120' WEST OF NW CORNER SW 1/4 SE 1/4

IRRIGATE 3.5 AC SE 1/4 SW 1/4; 24.7 AC SW 1/4 SE 1/4; 11 AC SE 1/4 SE 1/4  
 ON ROTATION BASIS OF APPROXIMATELY 15 ACRES ANNUALLY

RESERVOIR CROSS SECTION (NOT SCALED)



R 52639 + 52670  
 R 6360 + 63610

15  
 22