

Tp 23 S R. 7 W

Scale 1" = 200'

SW¹/₄ NW¹/₄

SE¹/₄ NW¹/₄

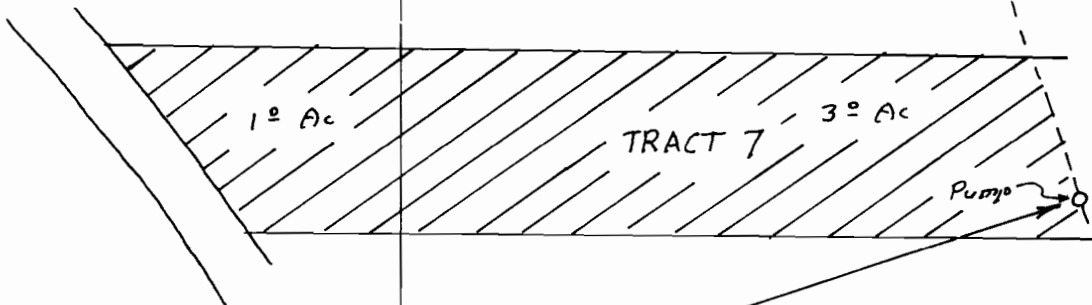
RECEIVED

SEP 15 1975

WATER RESOURCES DEPT
SALEM, OREGON

Application No.
Permit No.

52634
39673



West 1/4 Corner of Section 28

N. 72° E.

2130 ft