

NW 1/4 SEC. 1 T. 4S. R. 10W. W.M.
TILLAMOOK COUNTY
1" = 200'

4S 10 1

Application No. 53473
Permit No. 38788

SEE MAP 35 10 36

N/A Col
Sec 1

35 36

2 1 100
7971 AC
8

S 19° 22' 35" E
2557.30

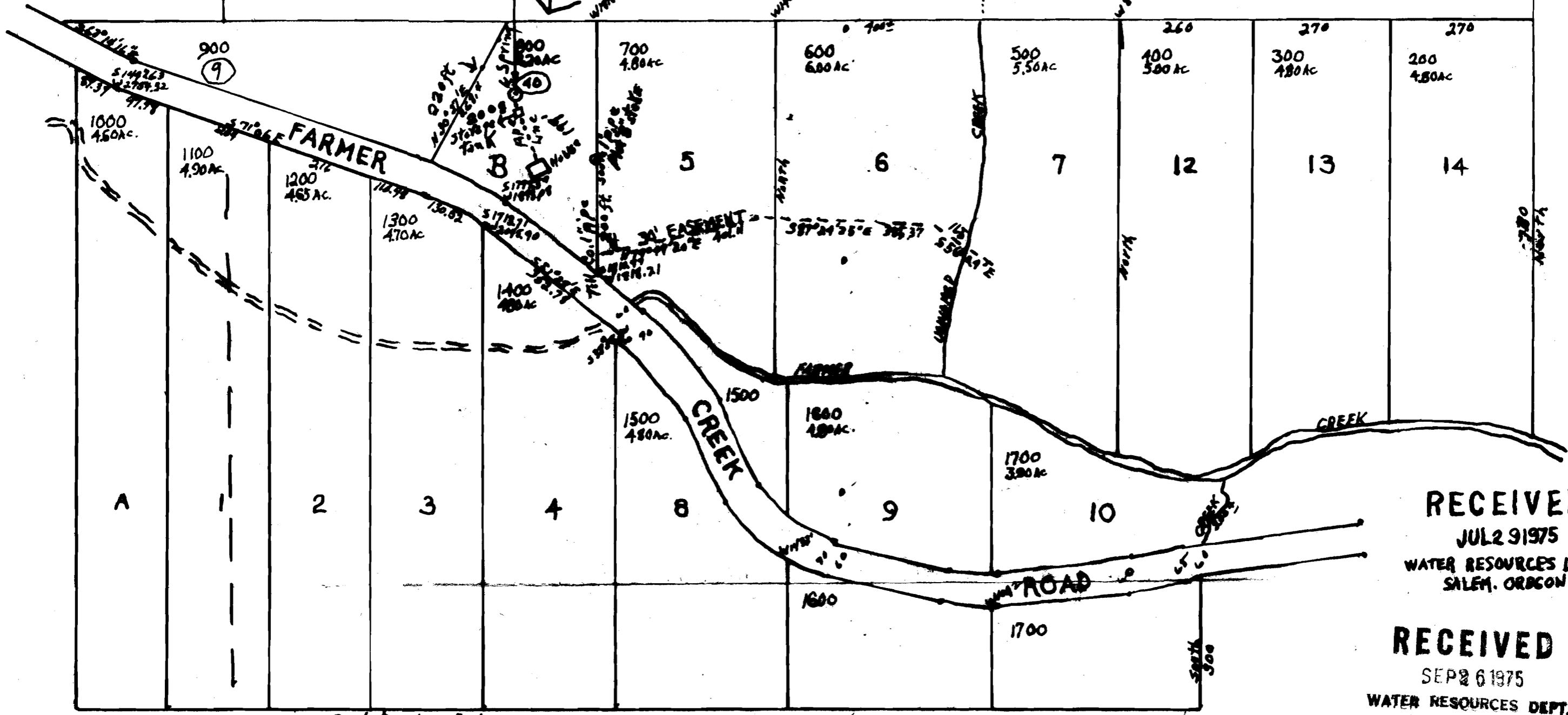
1975'

1475'

1320
500'

Property of
Robert A. Tomstad
Betty J. Tomstad
Plot B

13-1



E-W theoretical

RECEIVED
JUL 29 1975
WATER RESOURCES DEPT.
SALEM, OREGON

RECEIVED
SEP 26 1975
WATER RESOURCES DEPT.
SALEM, OREGON

4S 10 1