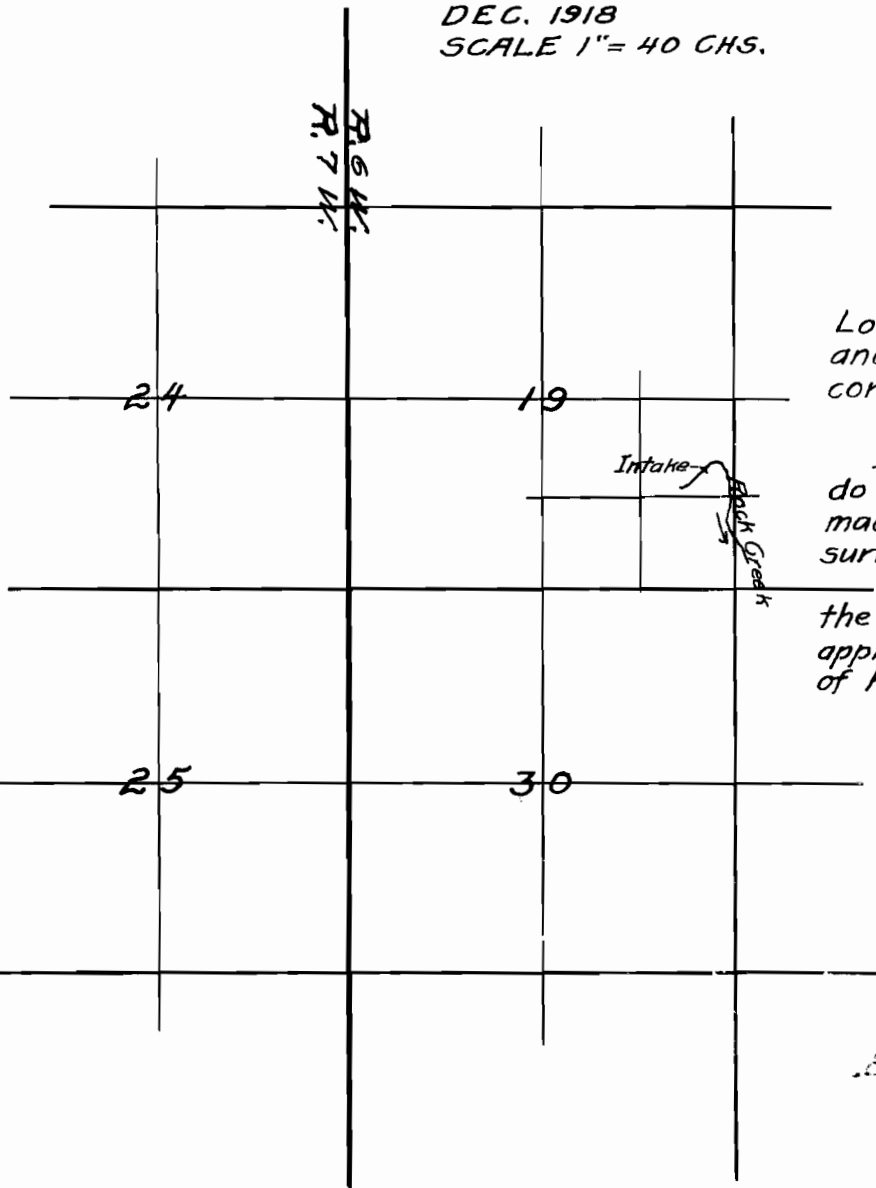


MAP SHOWING  
PROPOSED LOCATION  
OF INTAKE

T. 12 S. R. 6 W.-W. M.  
DEC. 1918  
SCALE 1" = 40 CHS.



Location of Intake 437.6 ft. West  
and 1708.1 ft. North of the S. E.  
corner of Sec. 19, T. 12 S. R. 6 W.-W. M.

I, Fred J. Porter, of Corvallis, Ore.  
do hereby certify that this map was  
made from notes taken during an actual  
survey made by me on Dec. 19<sup>th</sup> 1918,  
and that it correctly represents  
the works described in the accompanying  
application, together with the location  
of Rock Creek

Fred J. Porter

Application No. 6371  
File No. 3979