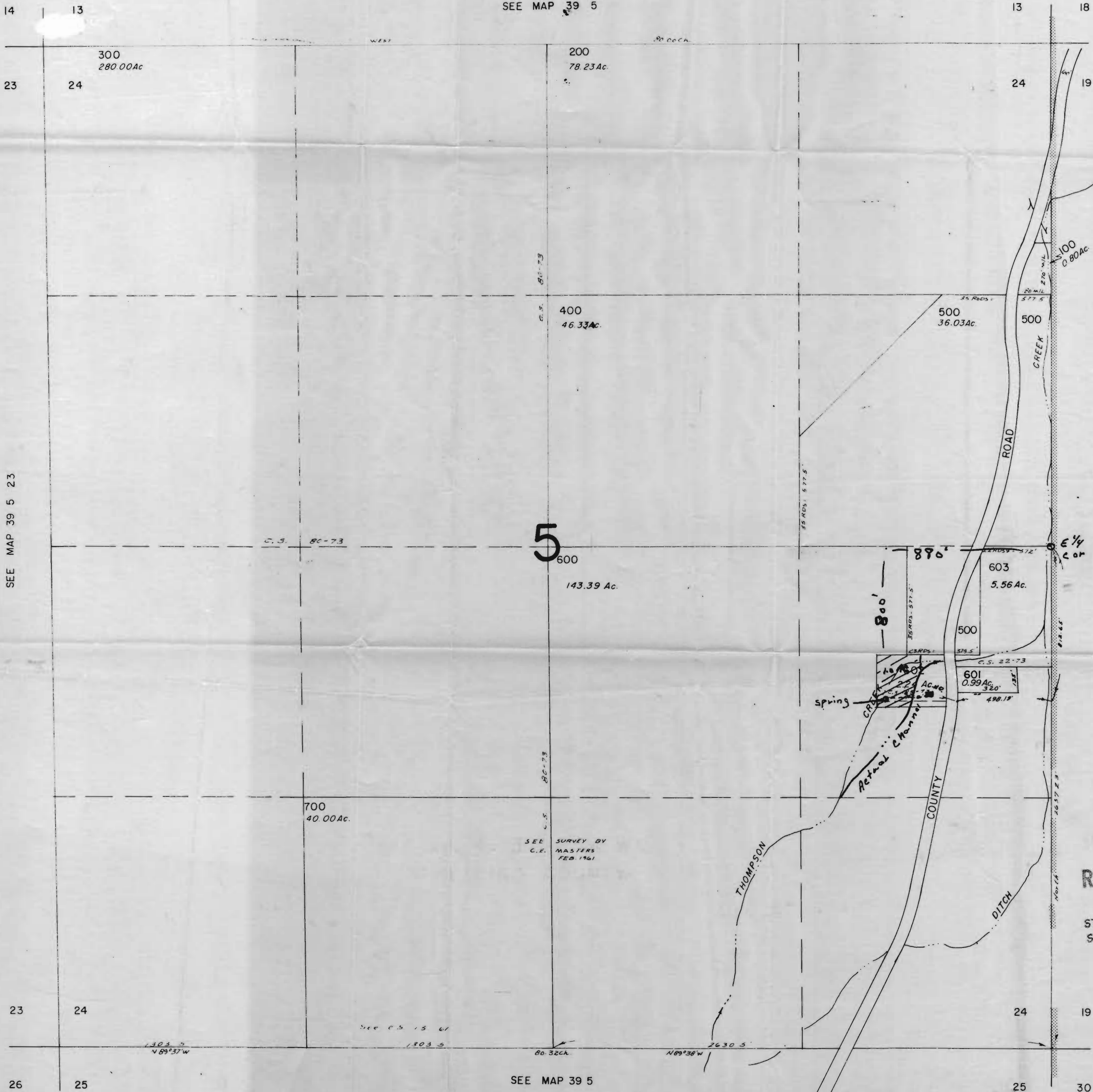


SECTION 24 T39S R5W W.M.  
JOSEPHINE COUNTY

1" = 400'

SEE MAP 39 5



SEE MAP 39 5 23

5

COUNTY

JACKSON

RECEIVED  
AUG 5 1974  
STATE ENGINEER  
SALEM, OREGON

SEE MAP 39 5

Application No. 52265  
Permit No. 39945