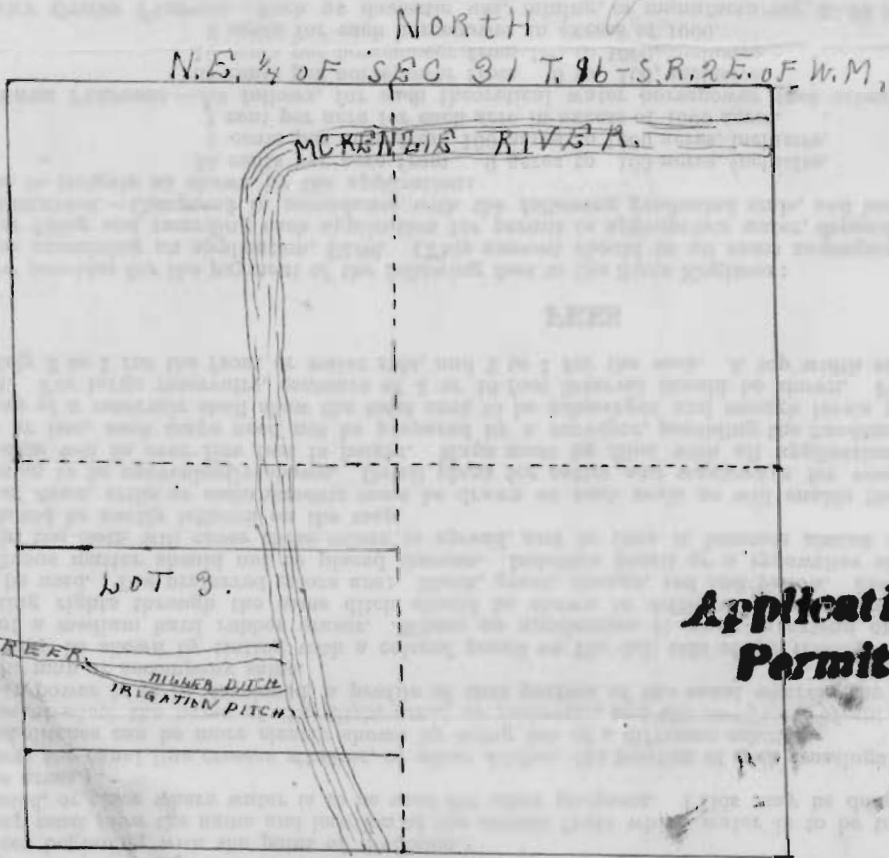


CERTIFICATE OF SURVEYOR

NOTE.—This certificate must be neatly lettered on the map in all cases, and signed by the surveyor.

I, J. H. Minney, of Uda, do hereby certify that this map was made from notes taken during an actual survey made by me (or under my immediate supervision) on Oct 2, 1919, and that it correctly represents the works described in the accompanying application, together with the location of streams and other ditches in the immediate vicinity.

J. H. Minney
Surveyor.



OFFICE OF STATE ENGINEER
RECEIVED
FEB 5 1919
SALEM, OREGON

Application No. 6401
Permit No. 3998