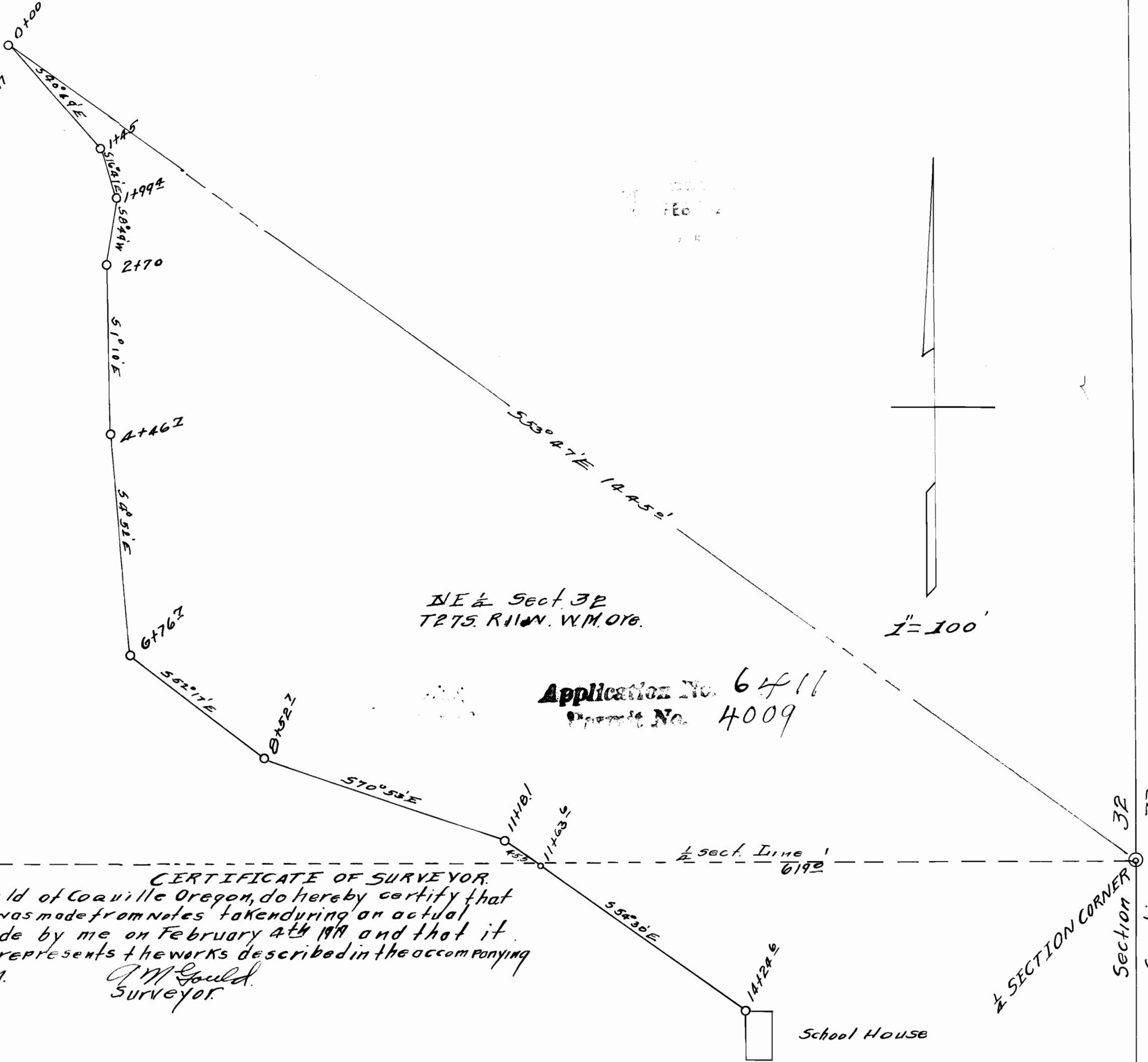


Diverting Point
Timber Dam 16109 & 1194



CERTIFICATE OF SURVEYOR.

I, A.N. Gould of Coquille Oregon, do hereby certify that this map was made from notes taken during an actual survey made by me on February 4th 1911 and that it correctly represents the works described in the accompanying Application.

A.N. Gould
Surveyor.

SE 1/4 Sect. 32
T27S. R11W. W.M. ORE.