

PLAT  
of  
SIMAS DITCH  
Scale - 2 1/2 Mile

Legend  
 Gravity supply [ ] 30  
 Ram supply [ ] 38

**Certificate of Surveyor.**

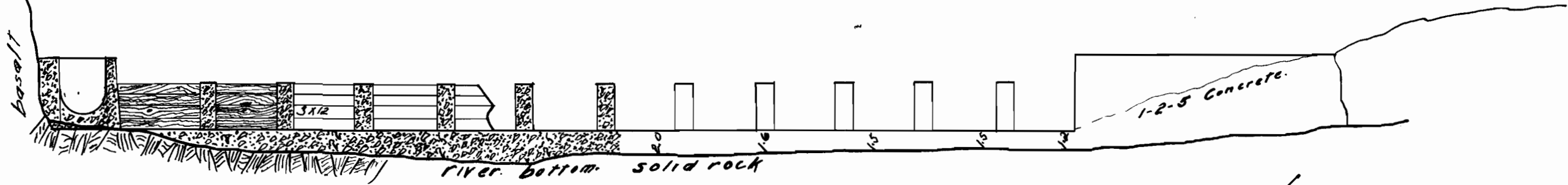
I, Vernon L. Glaze of Canyon City, Ore. do hereby certify that this map was made from notes taken during an actual survey, made by me on Dec. 1-20, 1918 and that it correctly represents the works described in the accompanying application, together with the location of streams and other ditches in the immediate vicinity, and has written thereon the area in each smallest legal subdivision which it is proposed to irrigate.

Vernon L. Glaze

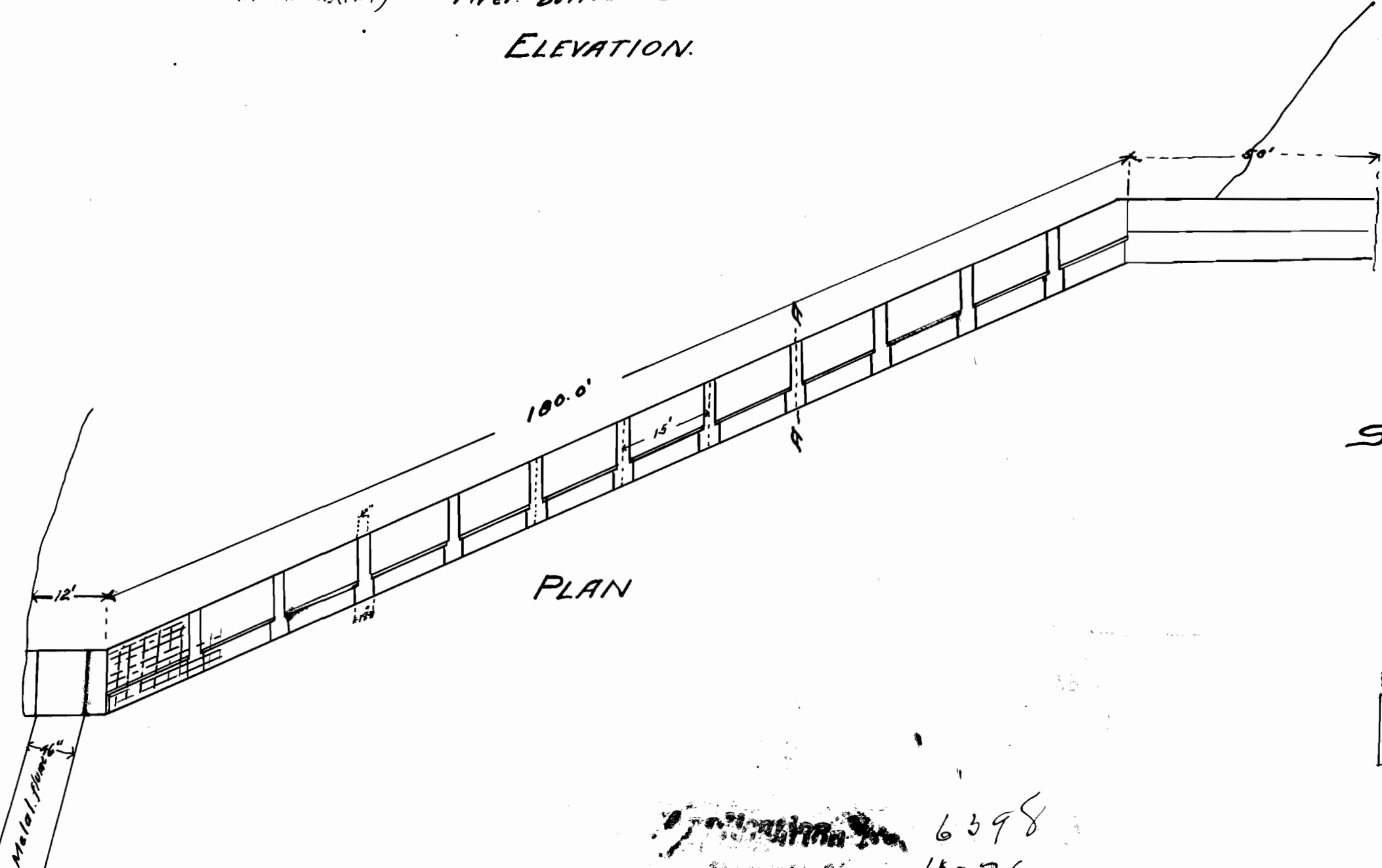
22

23

340

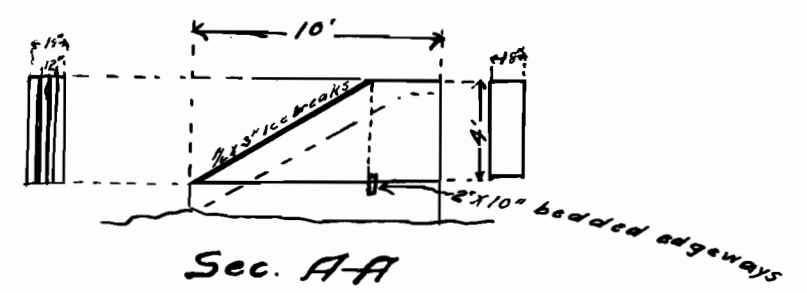


ELEVATION.



PLAN

RIVER DAM.  
 scale 1/8" = 1'  
 Simas Ditch Co.



Sec. A-A

6398  
 4036