

RECEIVED
AUG 26 1975
WATER RESOURCES DEPT.
SALMON, OREGON

SE 1/4 SECTION 14 T2S RIW W.M.

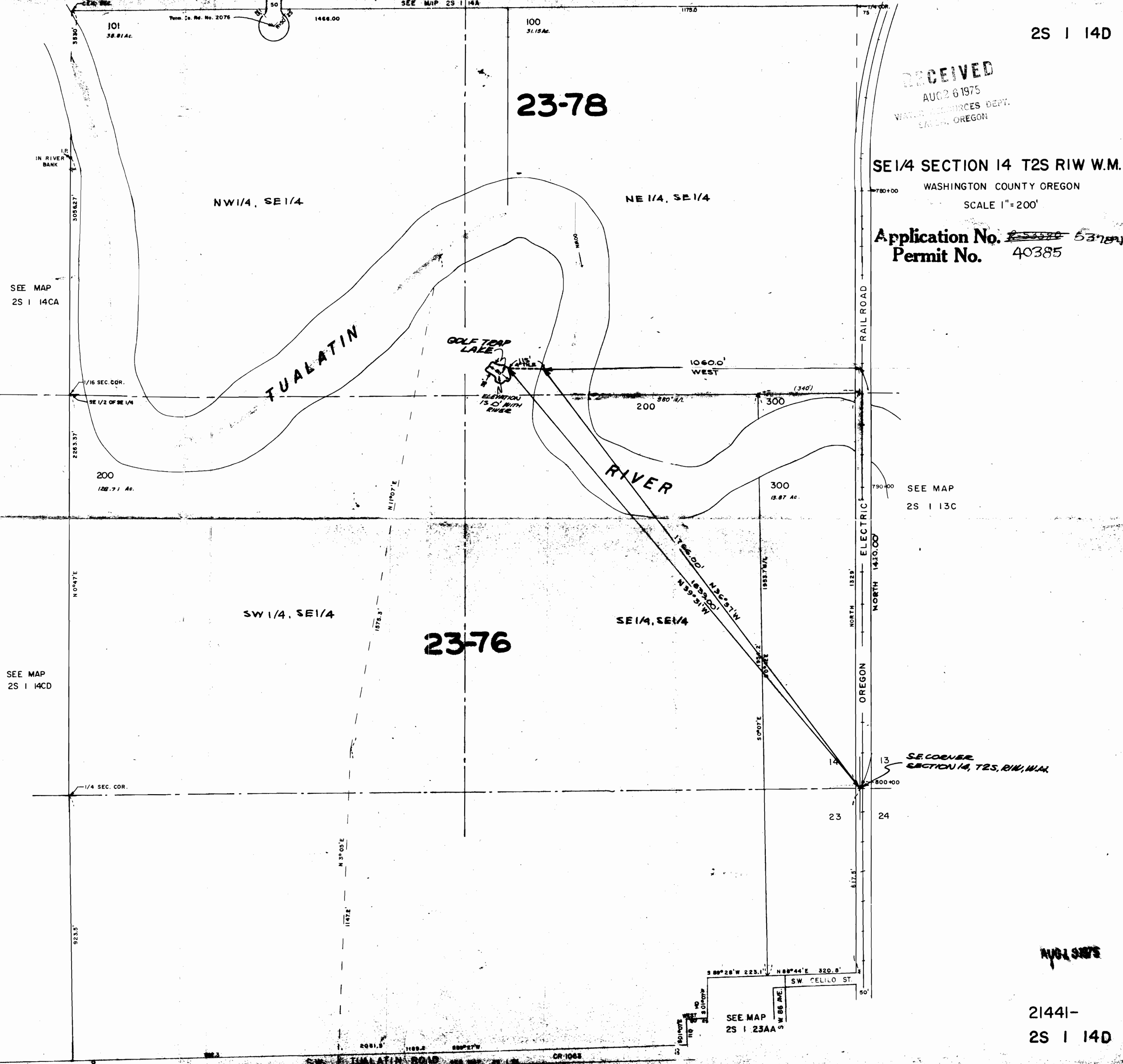
WASHINGTON COUNTY OREGON

SCALE 1" = 200'

Application No. ~~53370~~ 53784
Permit No. 40385

23-78

23-76



SEE MAP
2S 1 14CA

SEE MAP
2S 1 14CD

SEE MAP
2S 1 13C

SEE MAP
2S 1 23AA