

RECEIVED

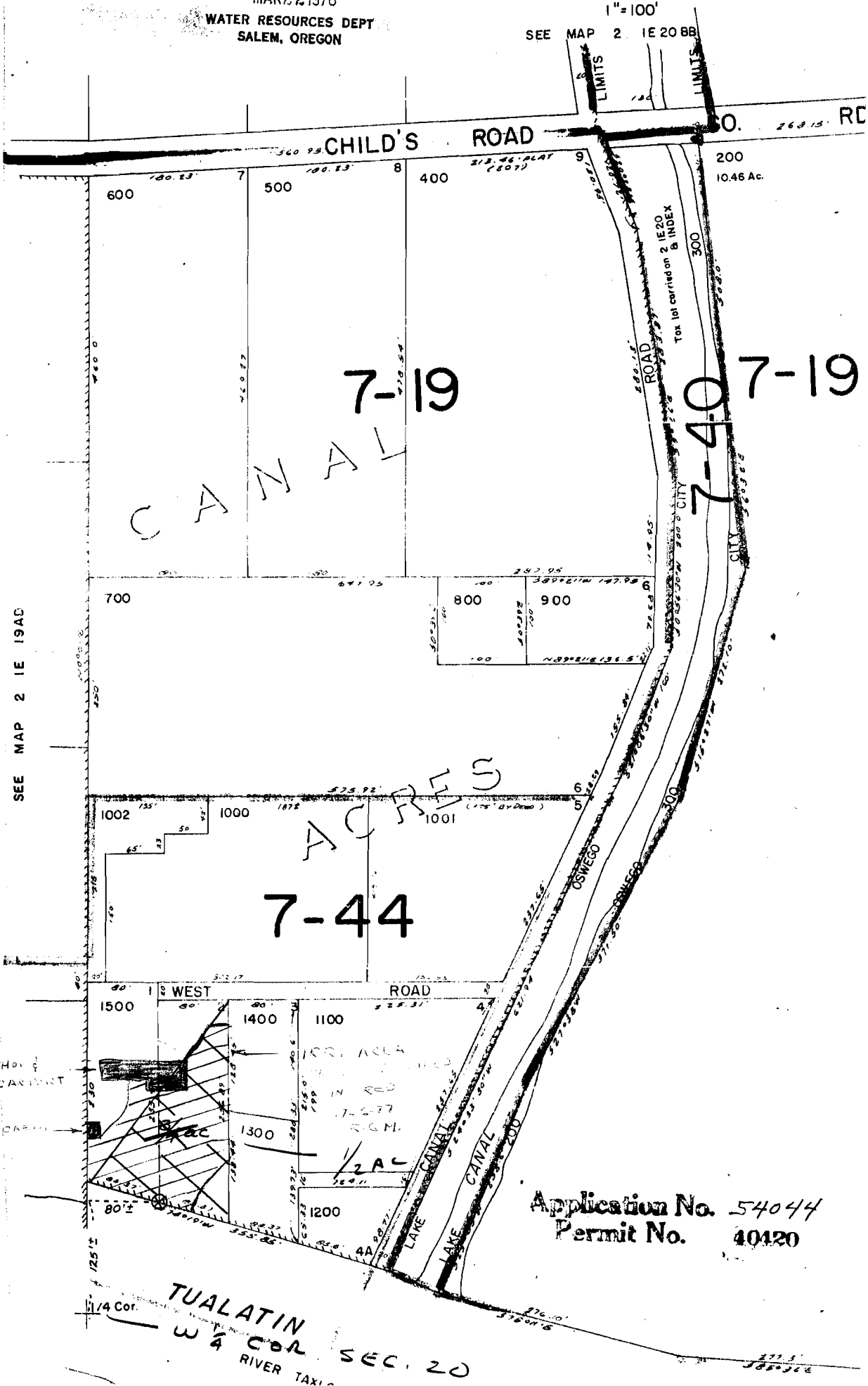
MAR 22 1976

WATER RESOURCES DEPT
SALEM, OREGON

S.W.1/4 N.W.1/4 SEC. 20 T.2S. R.1E. W.M.
CLACKAMAS COUNTY

1" = 100'

SEE MAP 2 IE 20 BB



CANAL

7-19

7-19

7-44

ACRES

Application No. 54044
Permit No. 40120

1/4 Cor.
TUALATIN
W 1/4 COR SEC. 20
RIVER TAXI

SEE MAP 2 IE 194C