

23 400

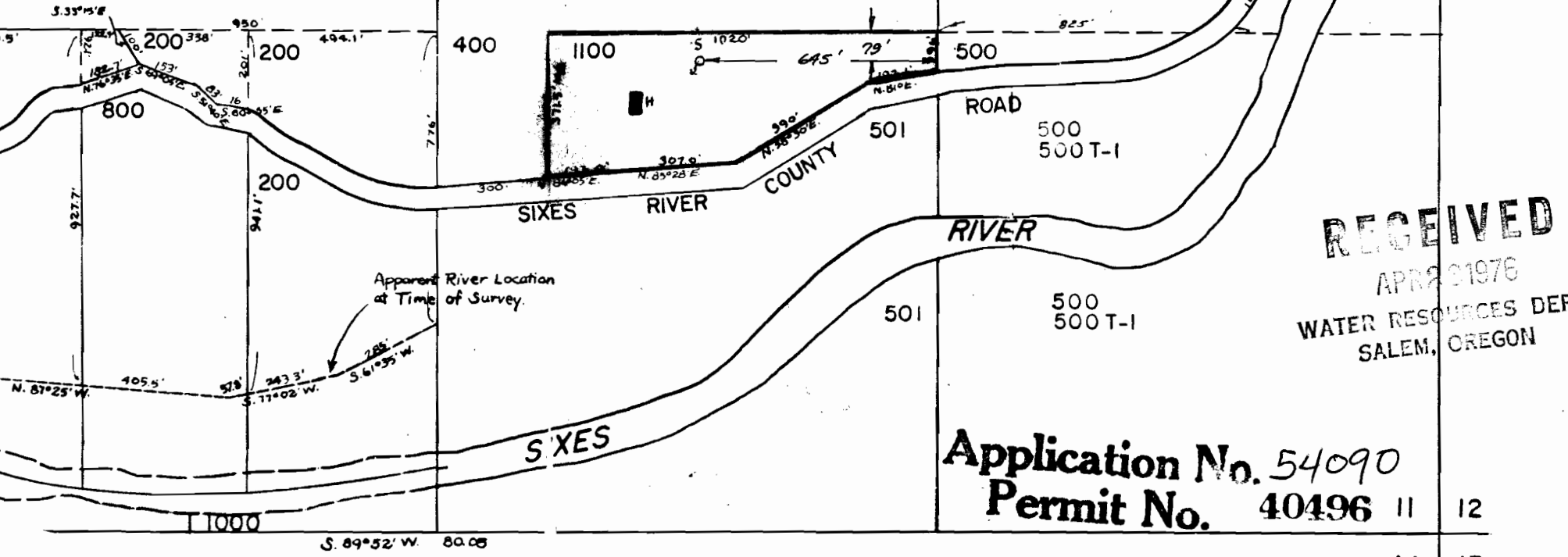
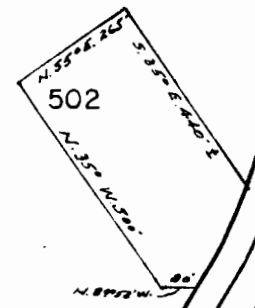
500

T.32 S. R.15 W.

The sketch above is made solely for the purpose of assisting in locating said premises and the Company assumes no liability for variations, if any, in dimensions and location ascertained by actual survey.

23937

RECEIVED
MAR 8 1976
WATER RESOURCES DEPT.
SALEM, OREGON



RECEIVED

APR 2 1976
WATER RESOURCES DEPT.
SALEM, OREGON

Application No. 54090
Permit No. 40496

11 12

14 13

See Map 22 15

N. 0° 01' W.
See Map 32