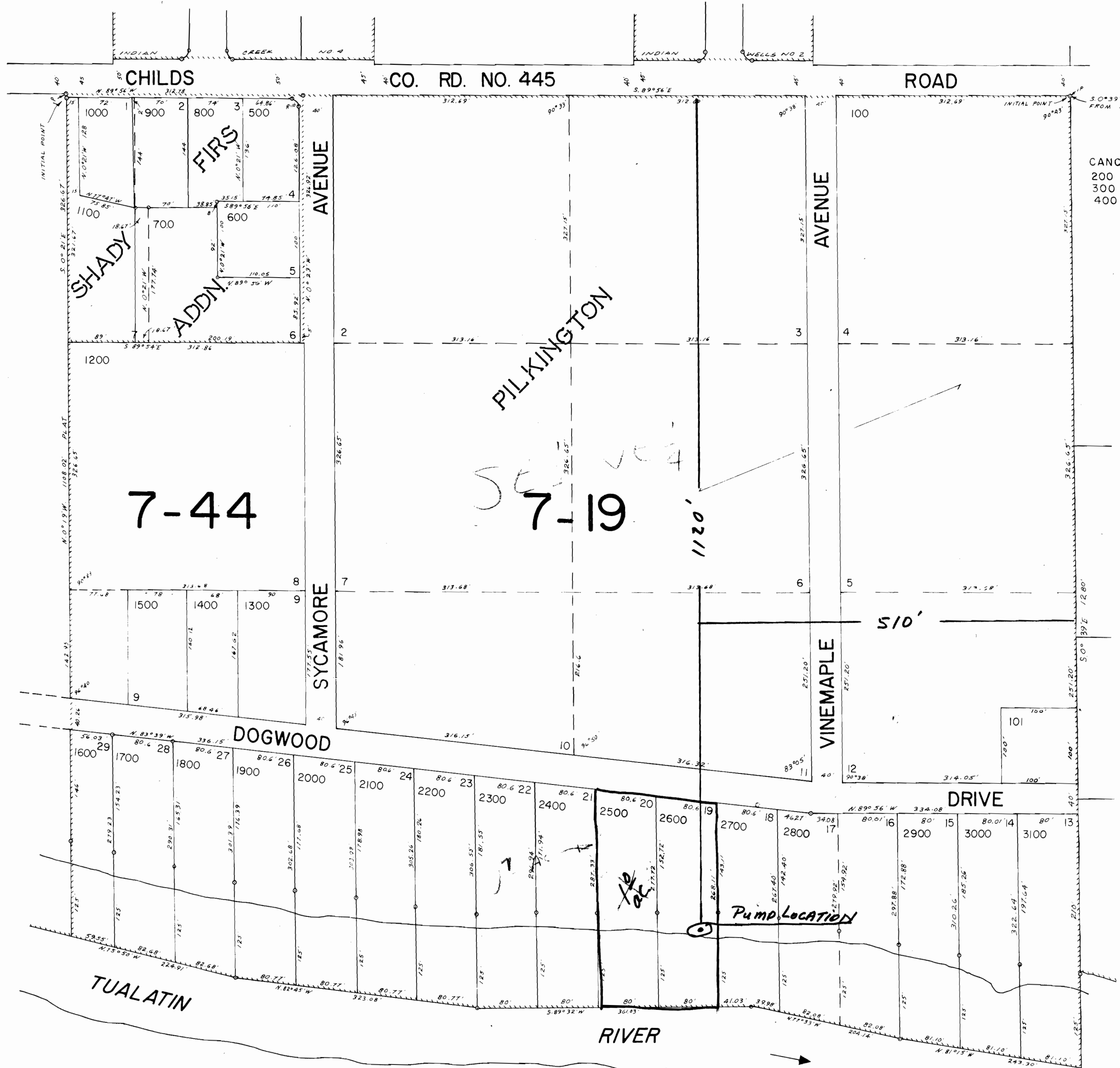


SE 1/4 NE 1/4 SEC. 19 T.2S. R.1E. W.M.
CLACKAMAS COUNTY

2 IE 19AD

1"=100

SEE MAP 2 IE 19AA



CANCELLED NO.
200
300
400

SEE MAP 2 IE 20BC

SEE MAP 2 IE 19AC

SEE MAP 2 IE 19

RECEIVED
 WATER RESOURCES DEPT
 SALLM. OREGON
 Application No. 6-54771
 Permit No. 40554
 2 IE 19AD