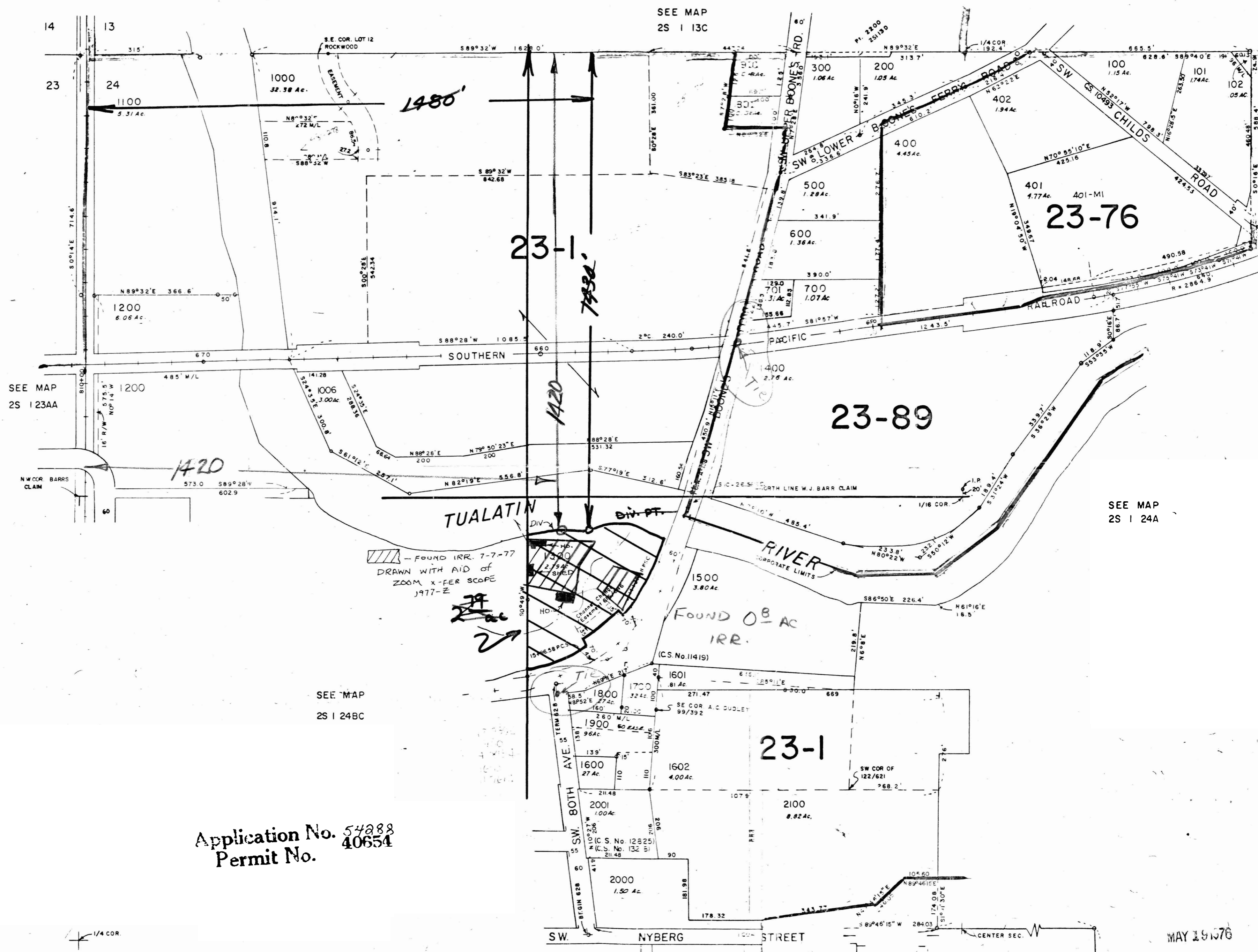


RECEIVED
MAY 19 1976
WATER RESOURCES DEPT
SALEM, OREGON

WASHINGTON COUNTY OREGON

SCALE 1"=200'

CANCELLED
1003, 1004, 1401, 2101,
1001, 1002, 1005,



SEE MAP
2S | 13C

SEE MAP
2S | 23AA

SEE MAP
2S | 24A

SEE MAP
2S | 24BC

SEE MAP
2S | 24C

Application No. 54888
Permit No. 40654

MAY 19 1976

2760.09' W. (1350.0' N)
TO SE COR. W. T.
BARR CLAIM

21681-
2S | 24B

J.S.W. 5/17/50