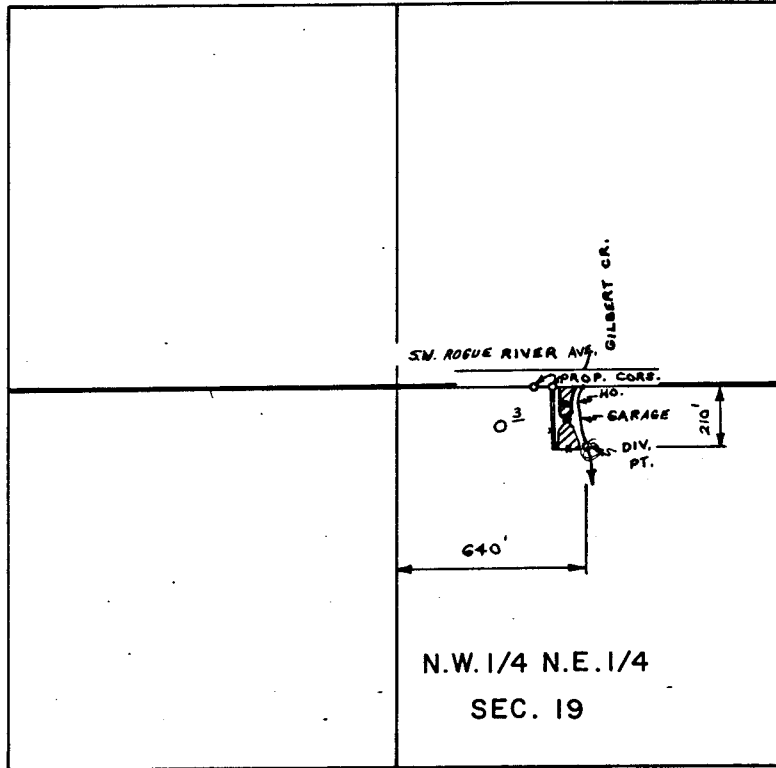


T. 36 S., R. 5 W., W.M.



SCALE : 1" = 660 FT.

FINAL PROOF SURVEY
UNDER

Application No. 54324 Permit No. 40728
IN NAME OF
W. W. SINGLETON

Surveyed OCT. 23 1978, by B. SUND

D.H.M.
P.T.S. - 1978-14-D

RECEIVED
OCT 1 1981
WM. DIST. 14
GRANTS PASS. ORE