

RECEIVED

Application No. R-53633-53624

JOSEPHINE COUNTY

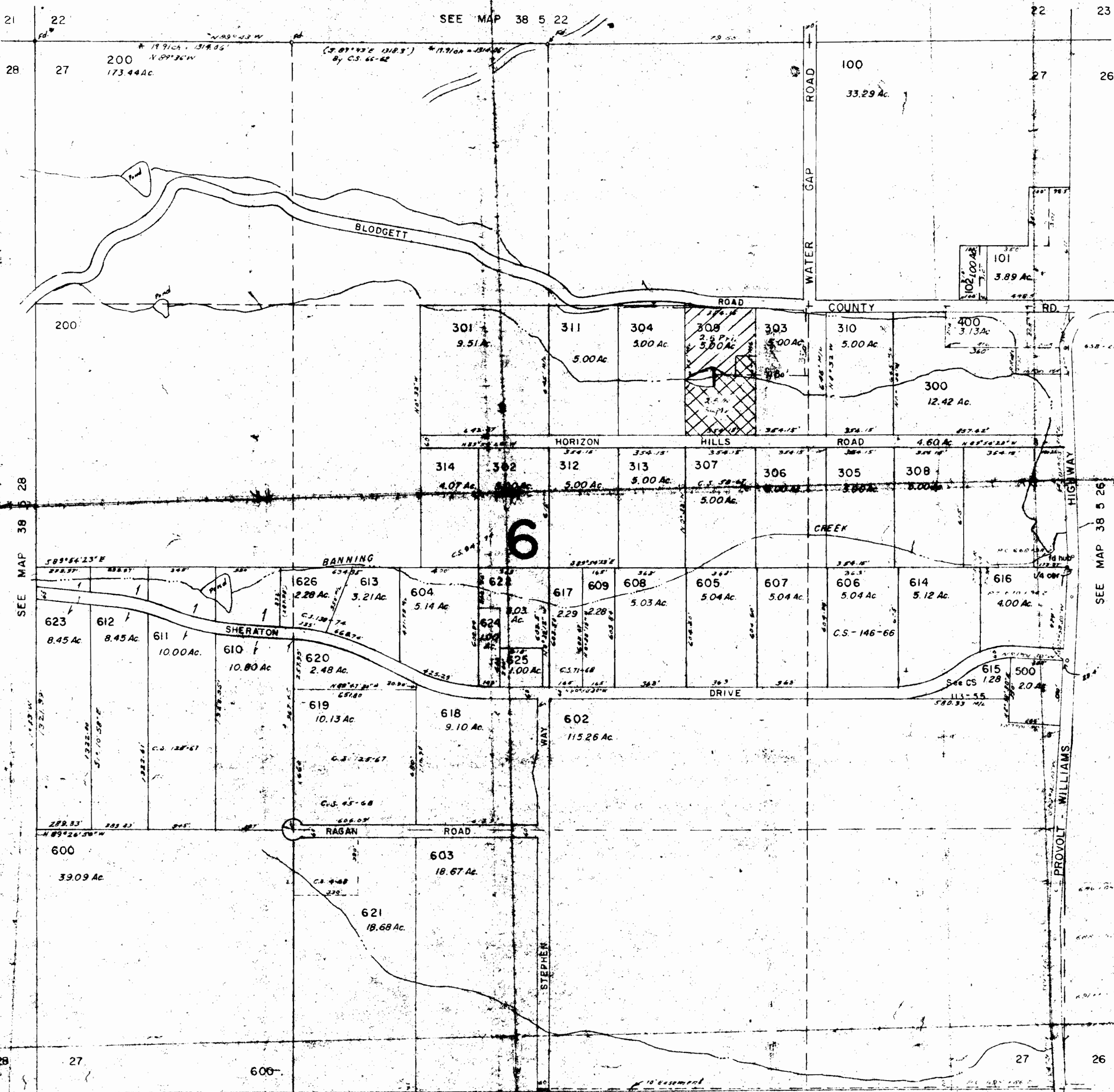
Permit No. R 6502-4-40779

1" = 400'

SEP 23 1975
WATER RESOURCES DEPT.
SALEM, OREGON

SEE N.D. PRICE BUR.
DATED 1956

SEE MAP 38 5 22



CANCELLED T.L.

190
601
690

SEE MAP 38 5 28

SEE MAP 38 5 26

SEE MAP 38 5 34