

A

RECEIVED

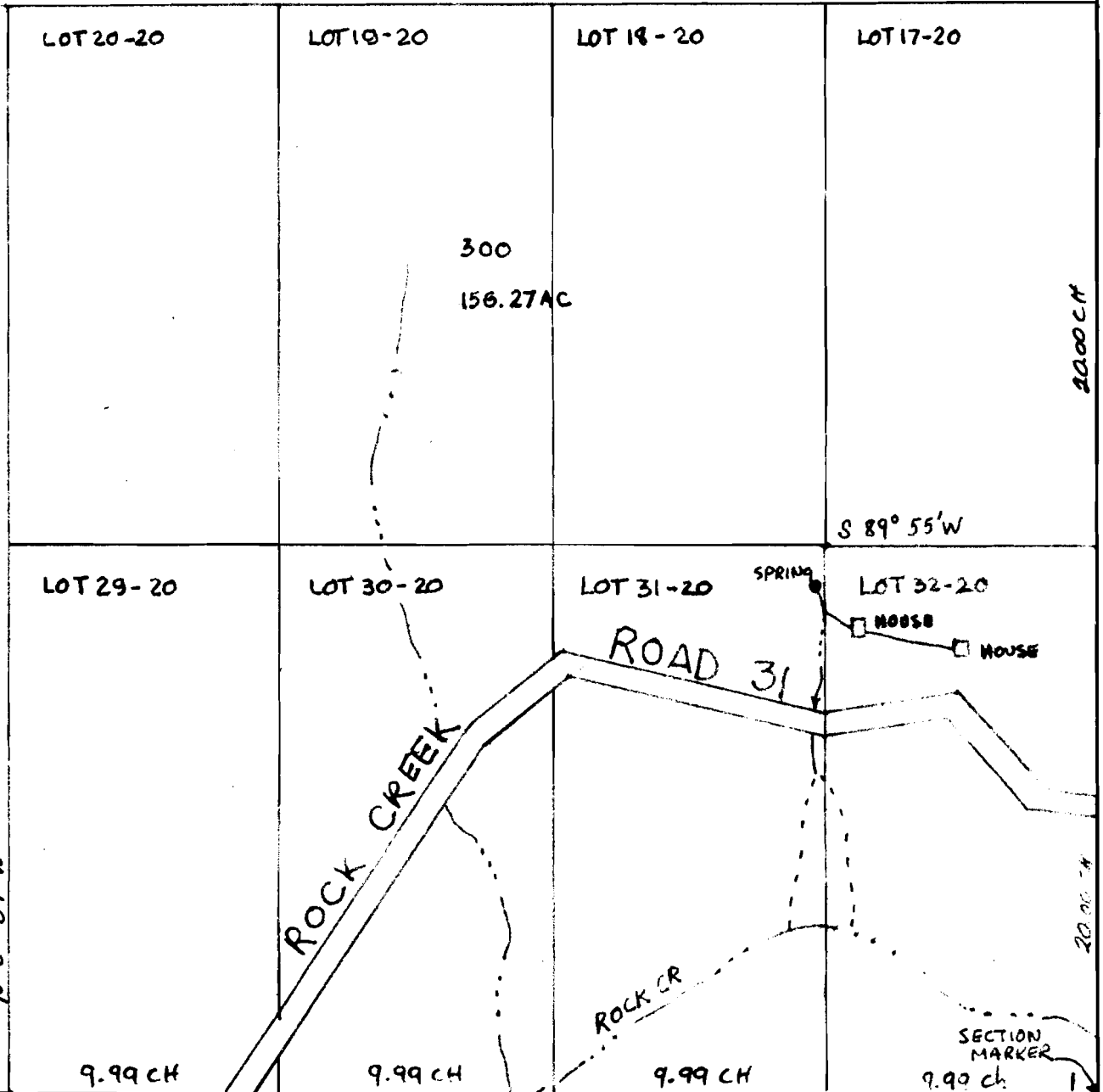
SEP 21 1976
WATER RESOURCES DEPT
SALEM, OREGON

RECEIVED

SEP 10 1976
WATER RESOURCES DEPT
SALEM, OREGON

Application No. 54810
Permit No. 41120

S 89° 56' W



NO.	DATE	REVISION	P.E. NO. CHARTER	WG./MS. NO.		EQUIP. NO.			DRAWING NO.
				SCALE		NO.	DAY	YR.	
DOMESTIC SUPPLIES BY GRAVITY PIPELINE TO RESERVOIR BY DIVERTING FROM SPRING LOCATED 1200' NORTH AND 670' WEST FROM THE SE. CORNER SECTION 1. TWO HOUSES LOCATED IN SE 1/4 SE 1/4 SECTION 1, TP 10 S, R 9 W W. M.				DRAWN					A
				CHECKED					
				APPROVED					