

SEC. 6 T7SR3WWM

POLK COUNTY

SCALE 1"=400'

RECORD

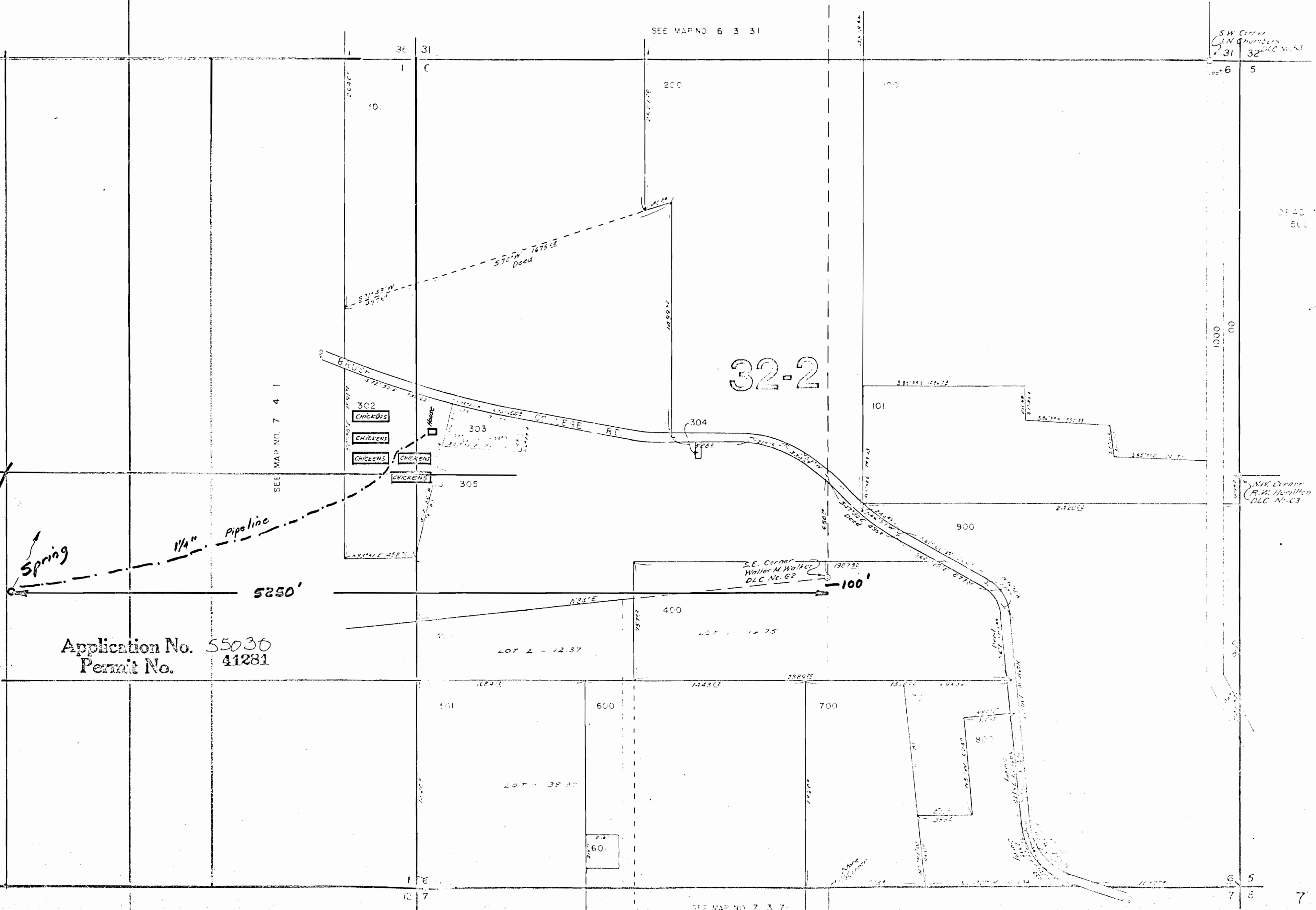
SEE MAP NO 6 3 31

SW Corner
J.N. Chambers
DLC No. 43
31 32

DEAD END
500'

SEE MAP NO. 7 3 5

SW Corner
R.W. Hamilton
DLC No. 63



32-2

SEE MAP NO. 7 4 1

Spring

1/4" Pipeline

5250'

100'

S.E. Corner
Walter M. Walker
DLC No. 62

Application No. 55030
Permit No. 41281

LOT 2 - 12.37

LOT - 38.20

SEE MAP NO 7 3 7

60'