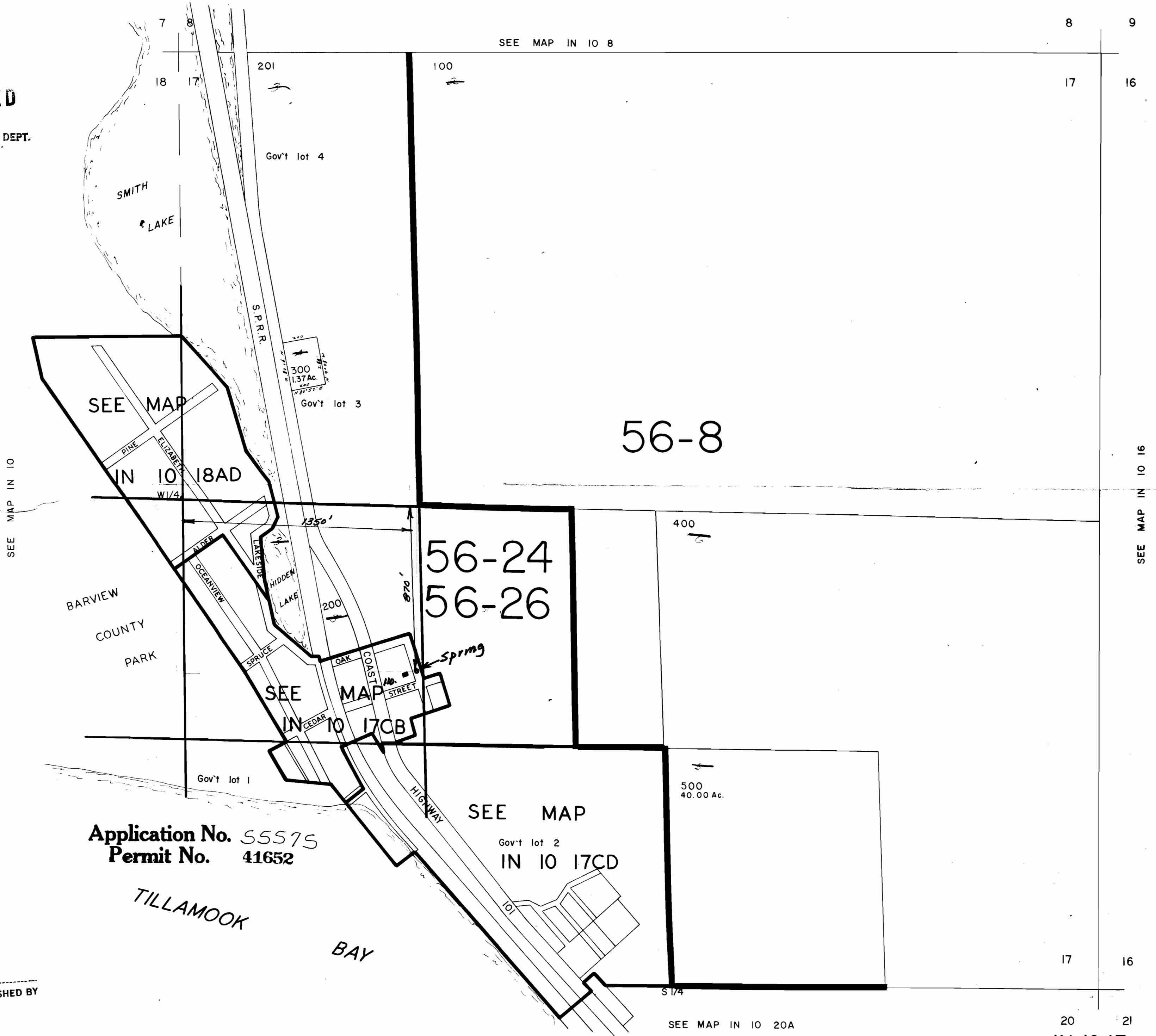


SECTION 17 T.1N. R.10W.W.M.
TILLAMOOK COUNTY

1" = 400'

RECEIVED
MAR 20 1977
COUNTY CLERK'S DEPT.



Application No. 55575
Permit No. 41652

TILLAMOOK
BAY

THIS MAP PREPARED BY:
David Derby
FROM INFORMATION FURNISHED BY
THE APPLICANT.