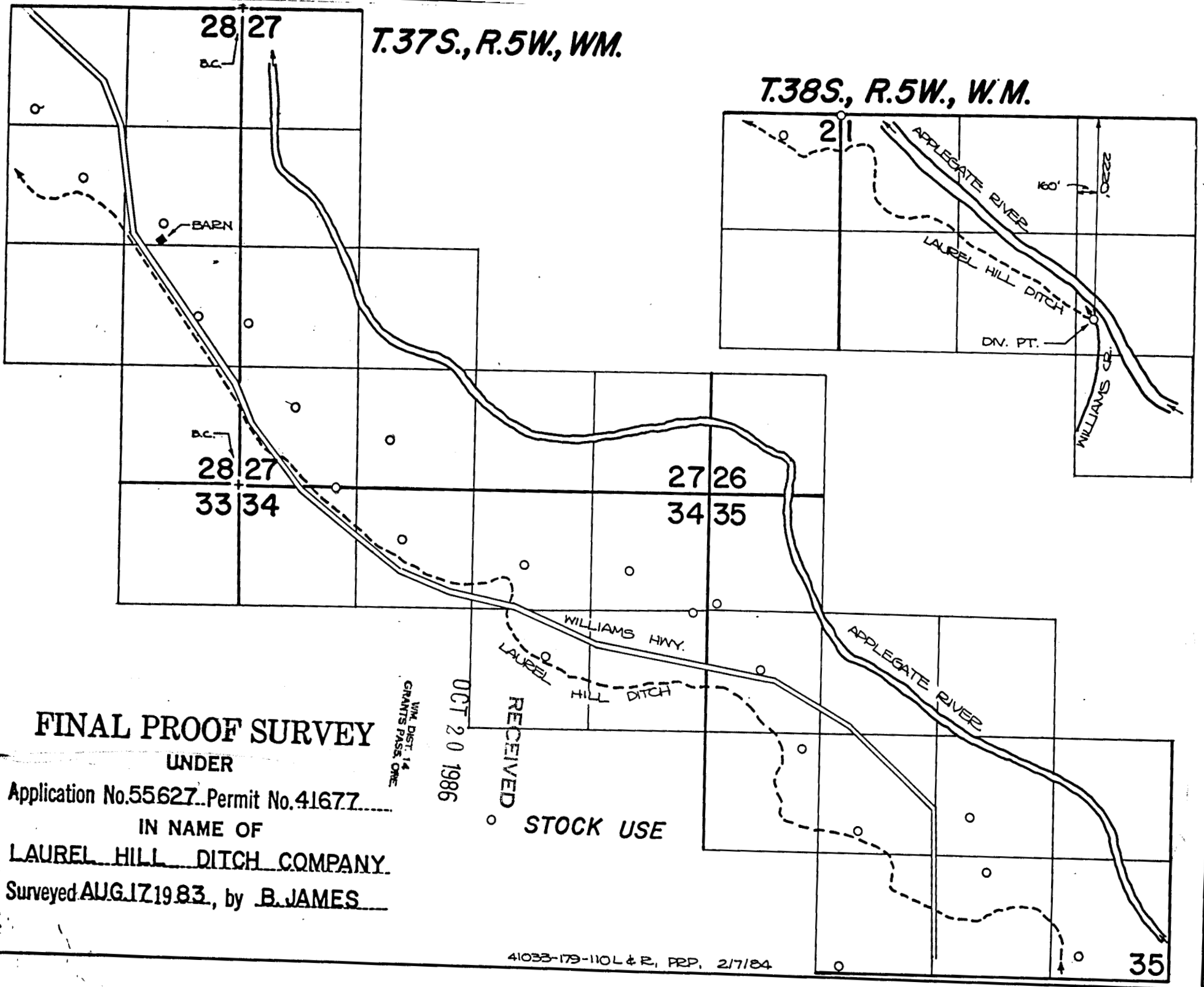


T.37S., R.5W., WM.

T.38S., R.5W., W.M.



# FINAL PROOF SURVEY

UNDER

Application No.55627..Permit No.41677.....

IN NAME OF

LAUREL HILL DITCH COMPANY.

Surveyed AUG.17.19.83., by B.JAMES

WM. DIST. 14  
GRANTS PASS, ORE.

OCT 20 1986

RECEIVED

STOCK USE