

NE1/4 SE1/4 SEC4 T34S R7EWM

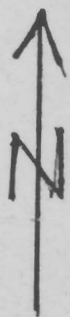
KLAMATH COUNTY

SCALE - 1" = 100'

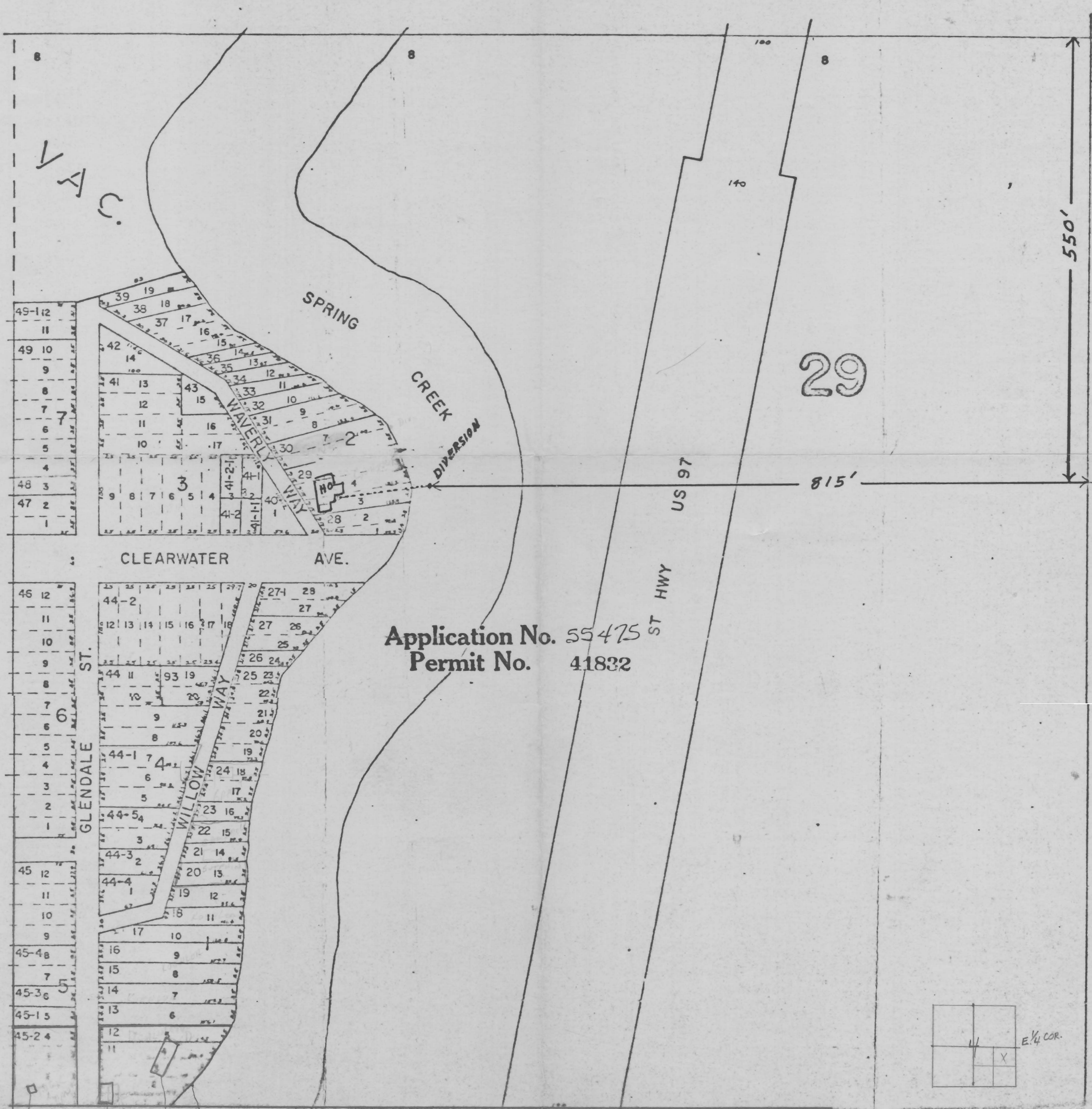
RECEIVED

WATER RESOURCES DEPT
SALEM, OREGON

45



LDLEREST



Application No. 55475
Permit No. 41832

WILLIAM TUBA... ASSOCIATES