

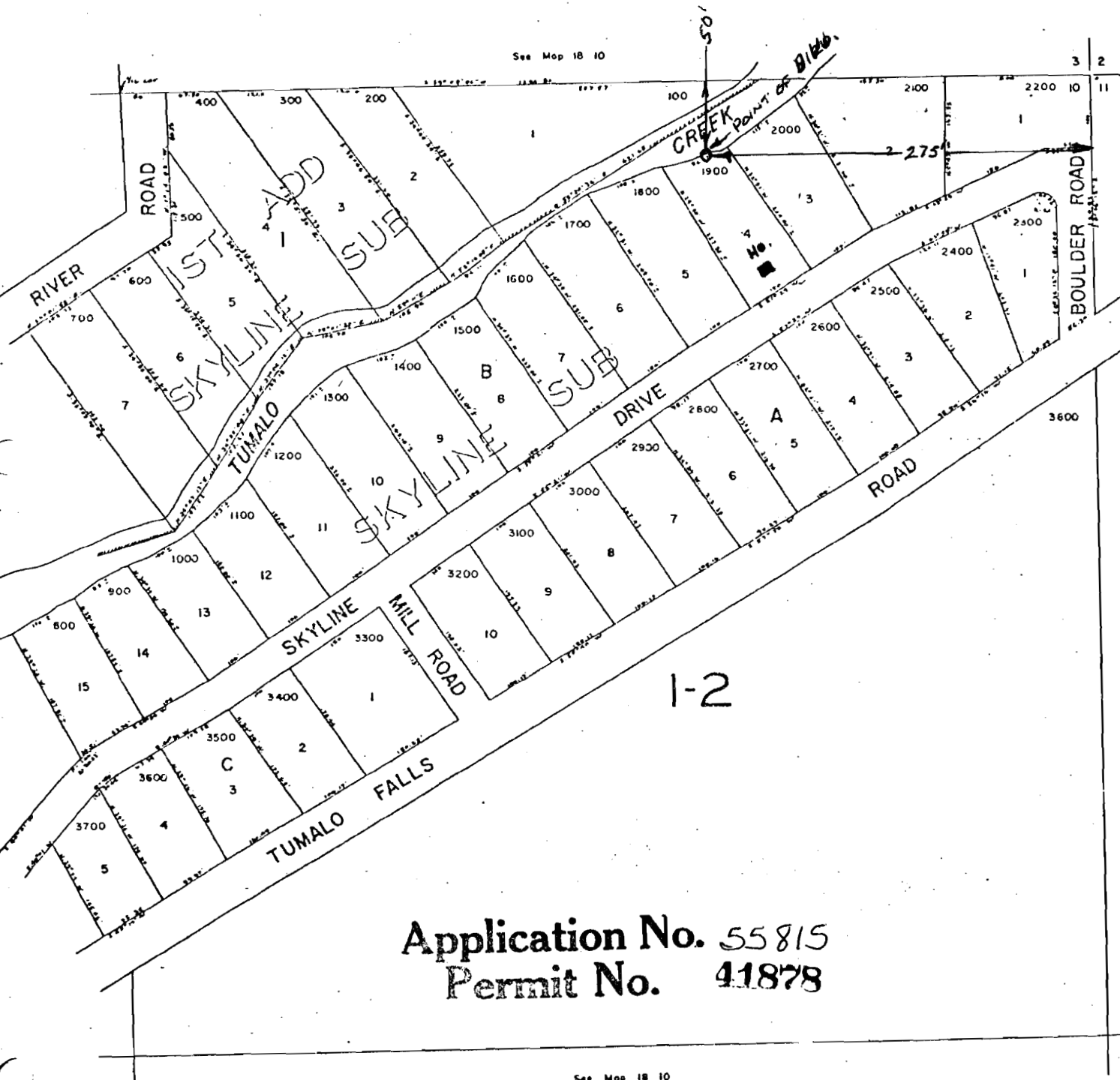
50' S
275' W OF NE COR SEC 10

NE 1/4 NE 1/4 SEC. 10 T. 18S. R. 10E. W.M.
DESCHUTES COUNTY

18 10 10AA

1" = 100'

See Map 18 10



See Map 18 10

Application No. 55815
Permit No. 41878

See Map 18 10

18 10 10AA