

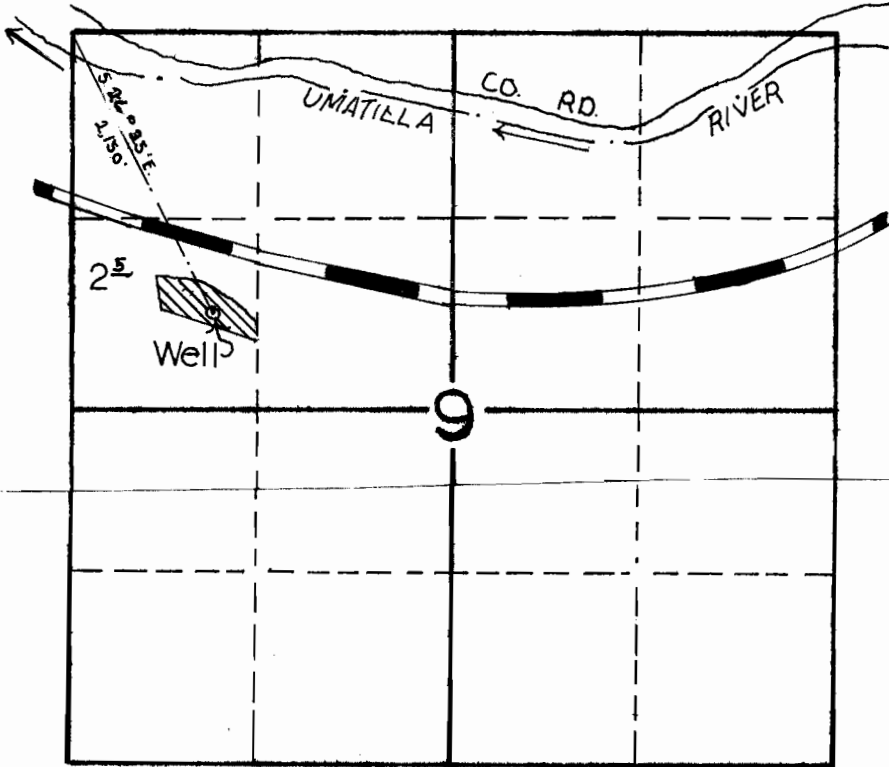
T 2N.

R. 30 E.

RECEIVED

OCT 23 1974

STATE ENGINEER
SALEM, OREGON



Scale 4"=1 Mile



RECEIVED

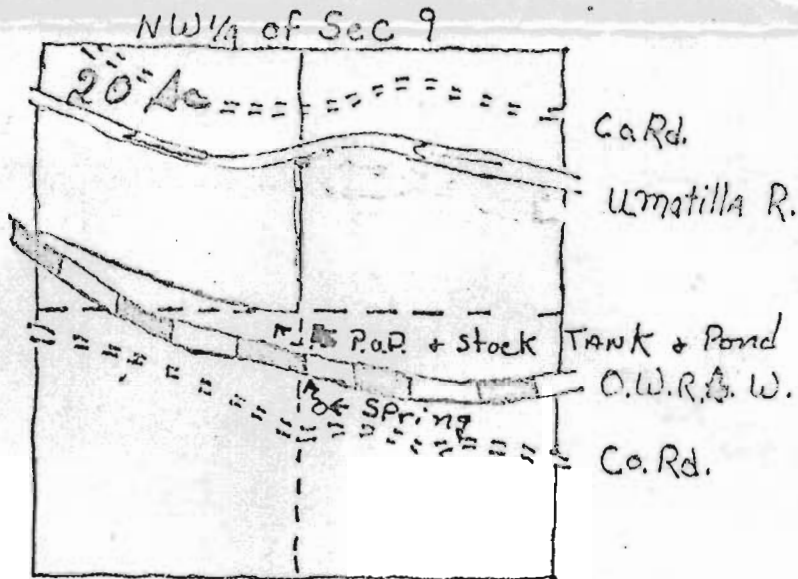
AUG 19 1974

STATE ENGINEER
SALEM, OREGON

Application No. G-6626

Permit No. G 6200

T. 2 N. R 30 E. W.M.
UMATILLA
COUNTY



Scale 1" = 1000

P.O.D. 1500 S. And 1550 E. from
N.W. corner of Sec. 9

Application No. 56016
Permit No. 42122

RECEIVED
JUN - 3 1977
WATER RESOURCES DEPT
SALEM, OREGON