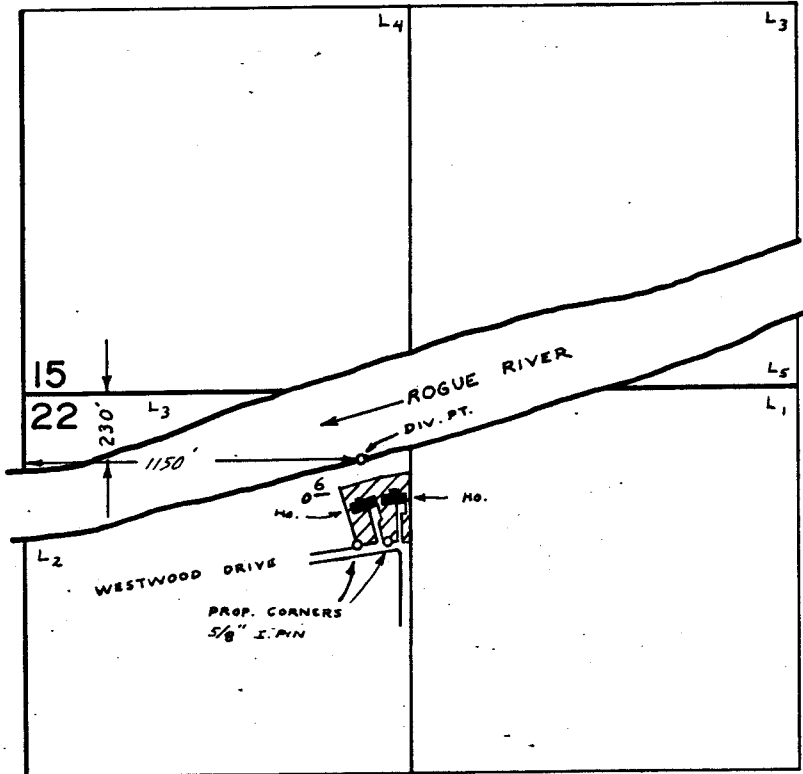


T.36 S., R.6 W., W.M.



RECEIVED  
OCT 1 1981  
WM. DIST. 14  
GRANTS PASS, ORE

SCALE : 1" = 660 FT.

**FINAL PROOF SURVEY**  
UNDER

Application No. 56414 Permit No. 42361  
IN NAME OF

PAUL BELFORD

Surveyed JUN. 23 1978, by B. SUND

P.T.S. - 1978 - 14 - A