

SW 1/4 SEC 11 T35S R7W W. M.
JOSEPHINE COUNTY

1" = 200'

Application No. 56555
Permit No. 42434

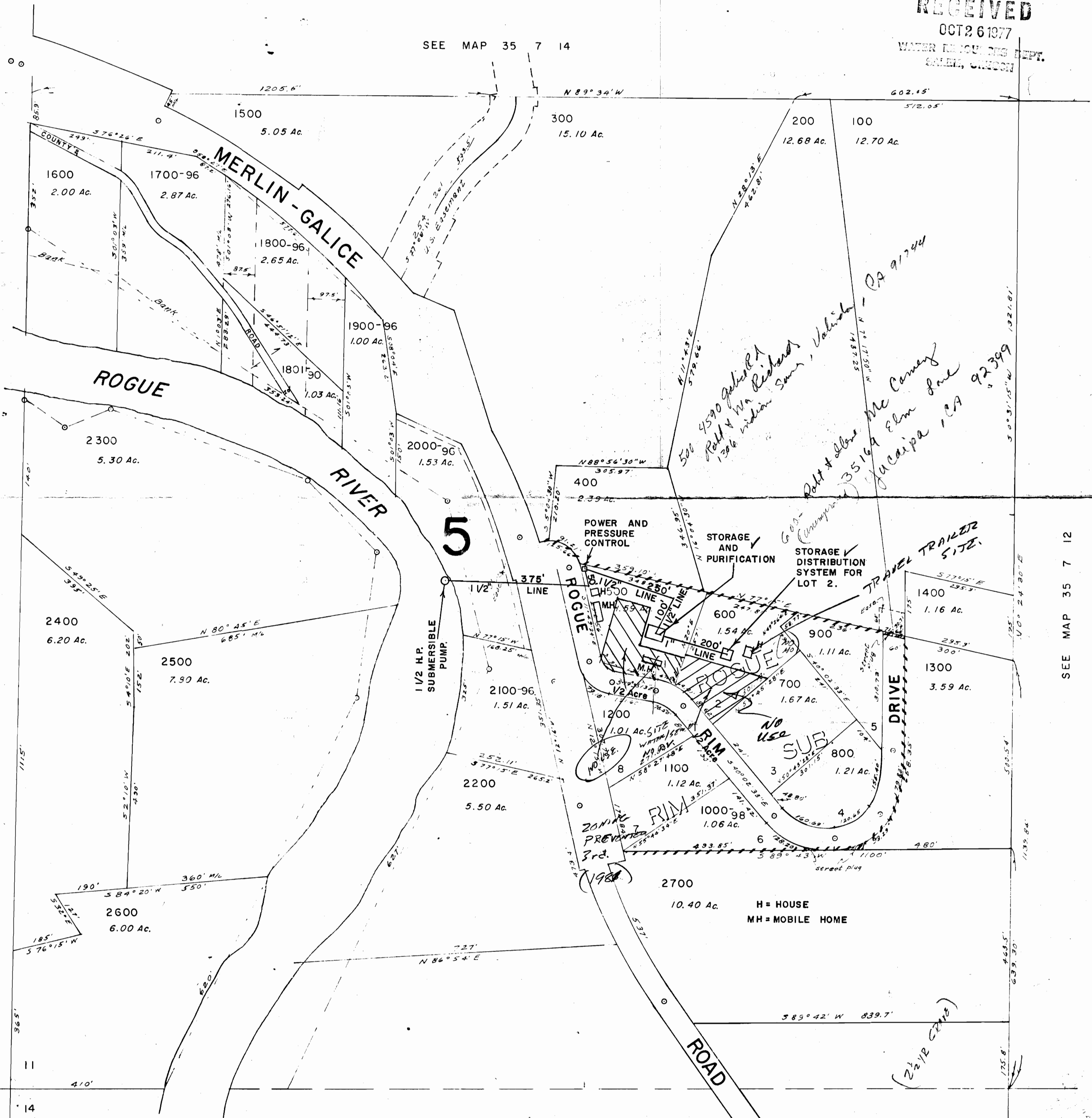
35 7 11-

RECEIVED

OCT 26 1977

WATER RESOURCES DEPT.
ASHEM, OREGON

SEE MAP 35 7 14



SEE MAP 35 7 12

11

14