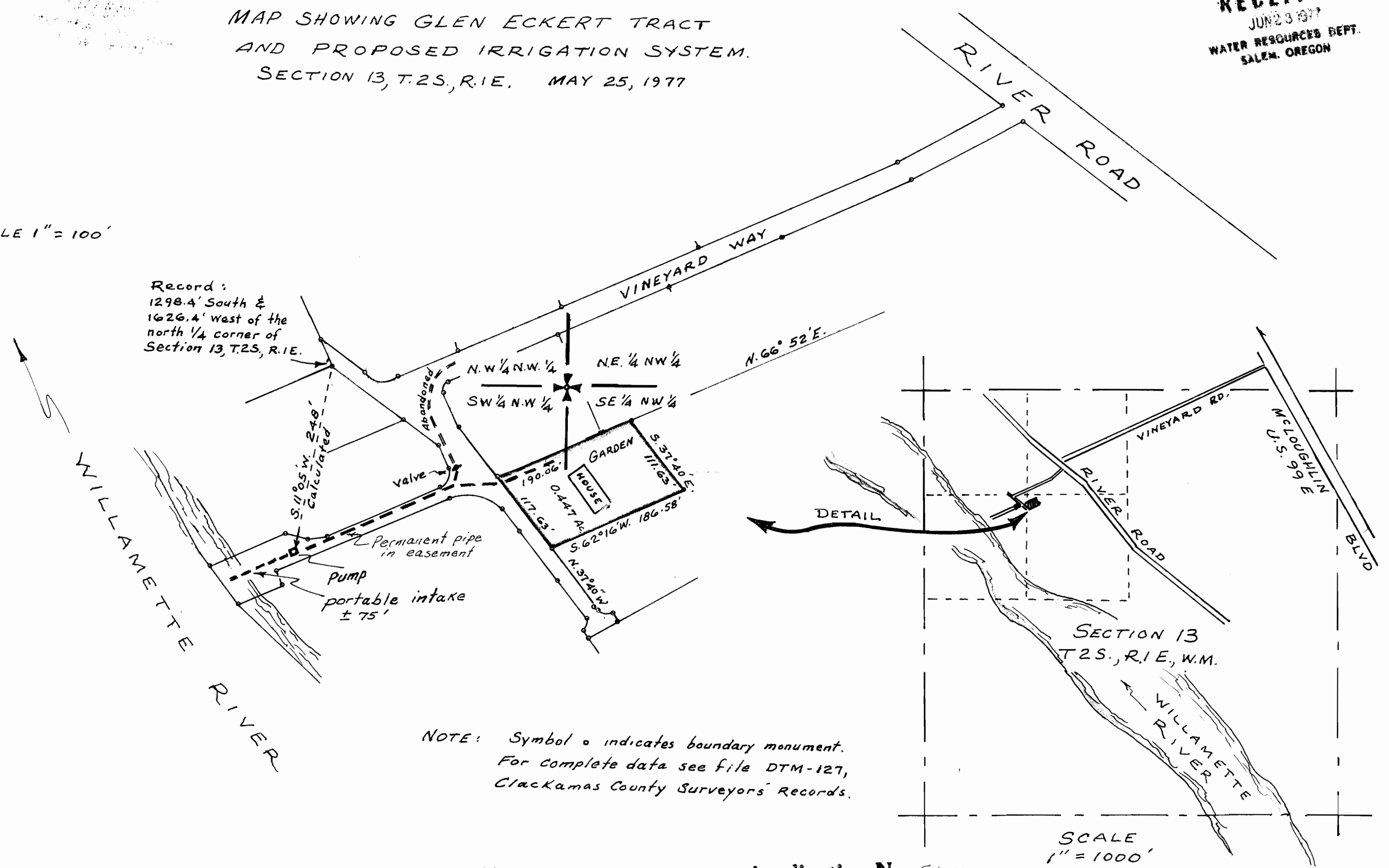


RECEIVED
JUN 23 1977
WATER RESOURCES DEPT.
SALEM, OREGON

MAP SHOWING GLEN ECKERT TRACT
AND PROPOSED IRRIGATION SYSTEM.
SECTION 13, T.2S., R.1E. MAY 25, 1977

NORTH
SCALE 1" = 100'

Record:
1298.4' South &
1626.4' West of the
north 1/4 corner of
Section 13, T.2S., R.1E.



NOTE: Symbol o indicates boundary monument.
For complete data see file DTM-127,
Clackamas County Surveyors' Records.

Application No. 56110
Permit No. 42503

SCALE
1" = 1000'