

Section 10

Scale 1" = 400'

95-2

Application No. 56888

Permit No. 42634

COUNTY ROAD

No. 639

NE 1/4 SW 1/4

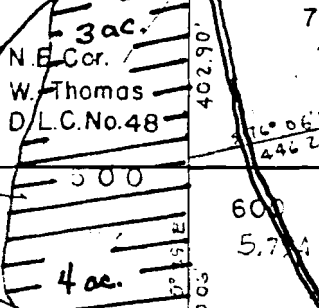
NW 1/4 SE 1/4

CREEK

No. 1

No. 2

(35.00 chs.)



700
7.84A

800

175.28A

SE 1/4 SW 1/4

THOMAS
HIGHWAY NO. 226
N. 38° 42' E (439° 20' CE)

RECEIVED

NOV 29 1977

WATER RESOURCES DEPT.
SALEM, OREGON

DIVERSION POINTS

- NO. 1 LOC. 40'S 250' W FROM THE W CORNER D.L.C. NO. 48
- NO. 2. LOC. 25'S 425' E FROM THE NE CORNER D.L.C. NO. 48

1/4 corner of Section 10

1/4 Cor. 39.875 chs. 61.0 17.75 chs. 62.0