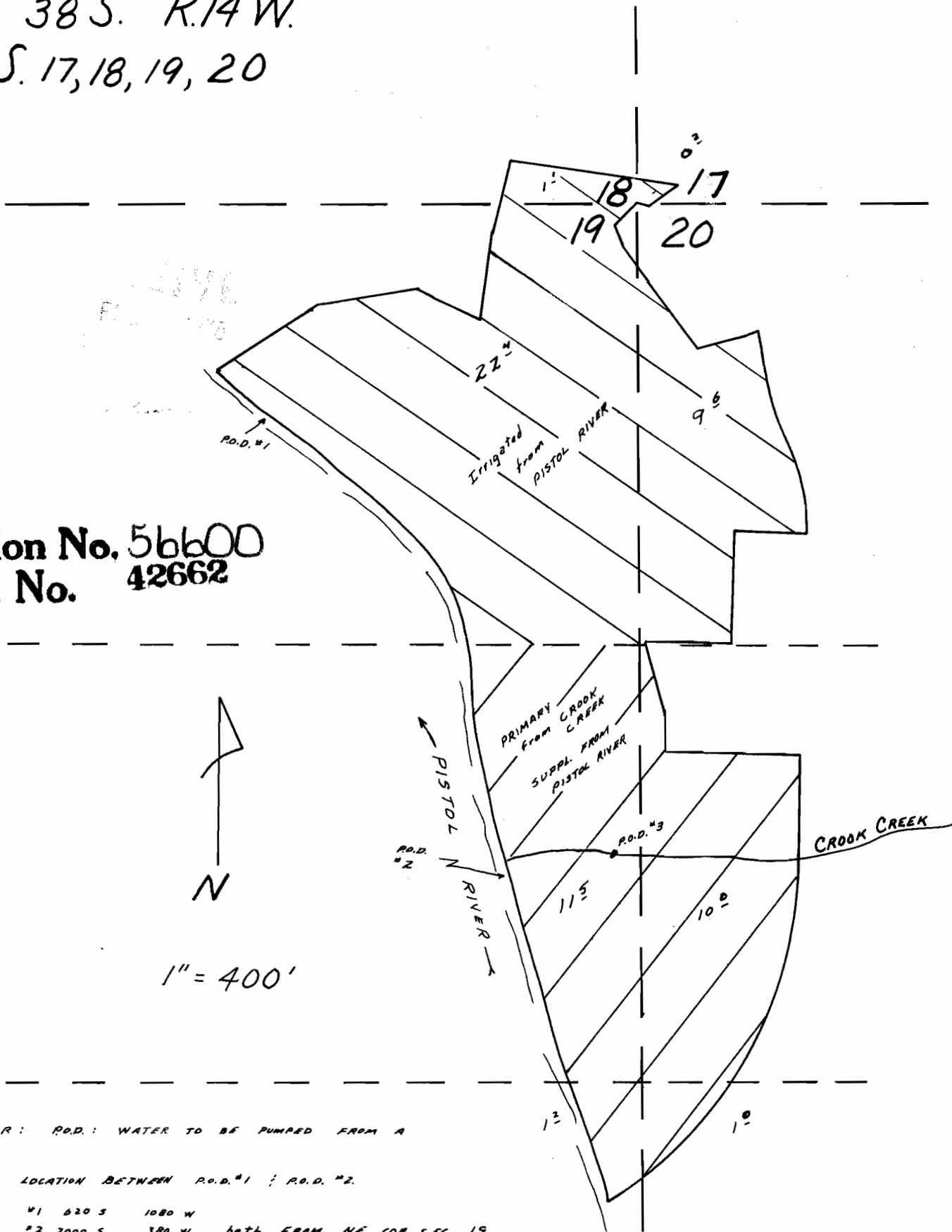


T. 38 S. R. 14 W.  
S. 17, 18, 19, 20

Application No. 56600  
Permit No. 42662



PISTOL RIVER: R.O.D.: WATER TO BE PUMPED FROM A

LOCATION BETWEEN R.O.D. #1 ; R.O.D. #2.

#1 620 S 1080 W  
#2 2000 S 380 W BOTH FROM NE COR SEC 19

CROOK CR: R.O.D. #3 1920 S 80 W FROM NE COR SEC. 19