

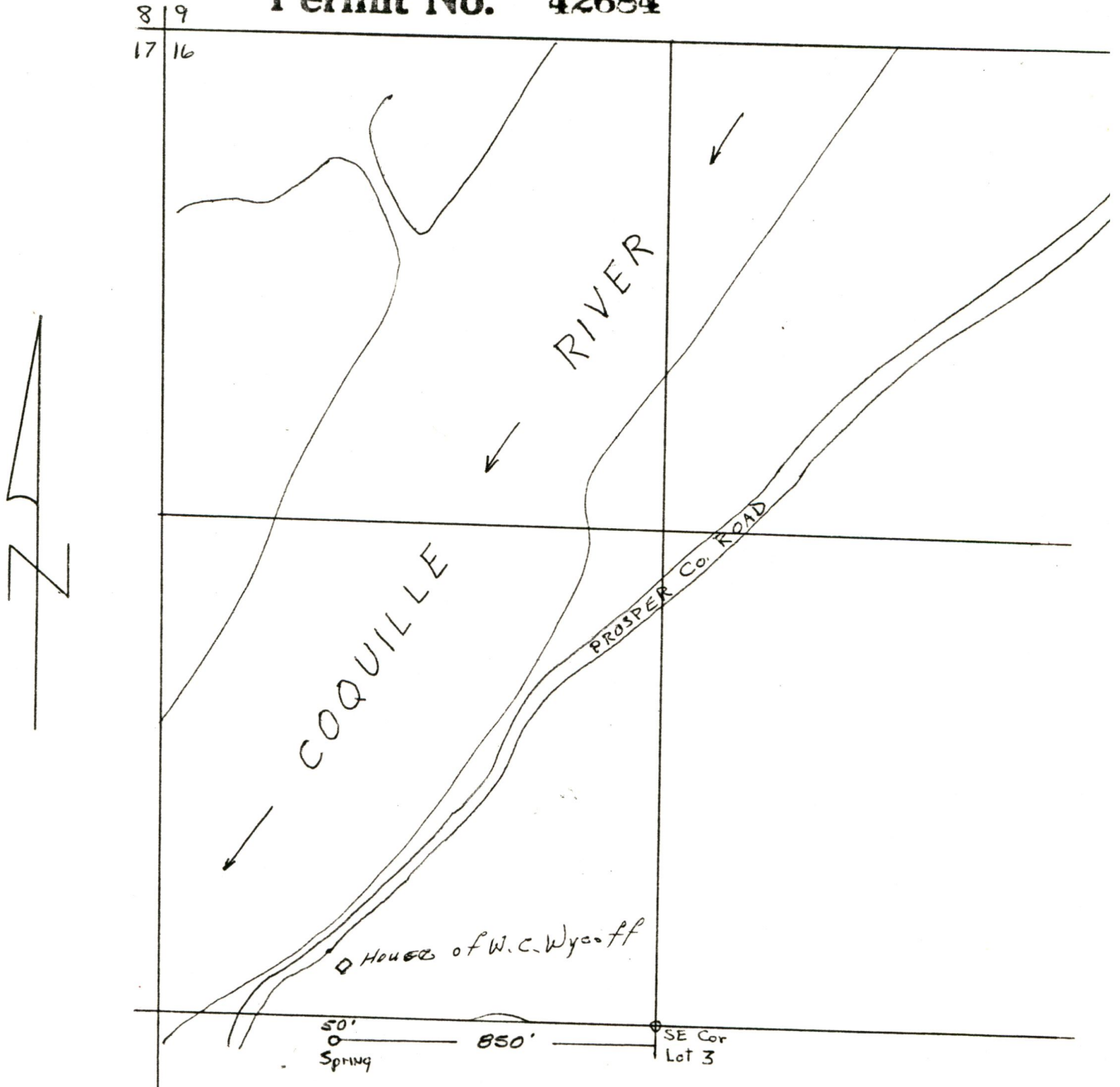
T28S R14W
Sec 16
Scale 1"=400'

RECEIVED

DEC 20 1977

WATER RESOURCES DEPT
SALEM, OREGON

Application No. 56937
Permit No. 42684



THIS MAP PREPARED BY: J. P. Drolet, N. Bend Office
FROM INFORMATION FURNISHED BY THE
APPLICANT.