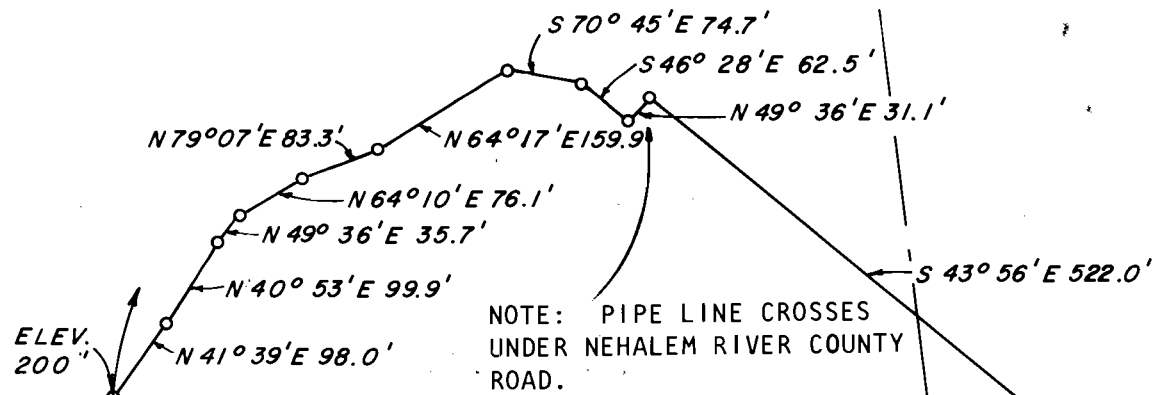


SOLAR OBSERVATION

MAGNETIC VARIATION	20°51'E
DATE	NOVEMBER 19, 1964
STANDARD TIME	9:29:08 AM
LOCAL TIME	9:13:56 AM
SUN'S DECLINATION	S19°35'30"
REF. & PAR. CORRECTION	-3'02"
LATITUDE	45°46'49"
SUN'S ALTITUDE	16°38'38"
PLACE OF OBSERVATION	S2°06'10"E1199.0'
FROM SECTION CORNER 4, 5, 32, 33, T.3&4N., R.9W., W.M.	



ELEV. 200'
 POINT OF DIVERSION
 INTAKE 5'X5'X2' HIGH
 COVERED TIMBER RESERVOIR
 7499.1 FT. SOUTH, 1,796.5 FT.
 EAST FROM SECTION CORNER
 TO SECTIONS 15, 16, 21 AND 22,
 T.3N., R.9W., W.M.

SE 1/4, NW 1/4

27

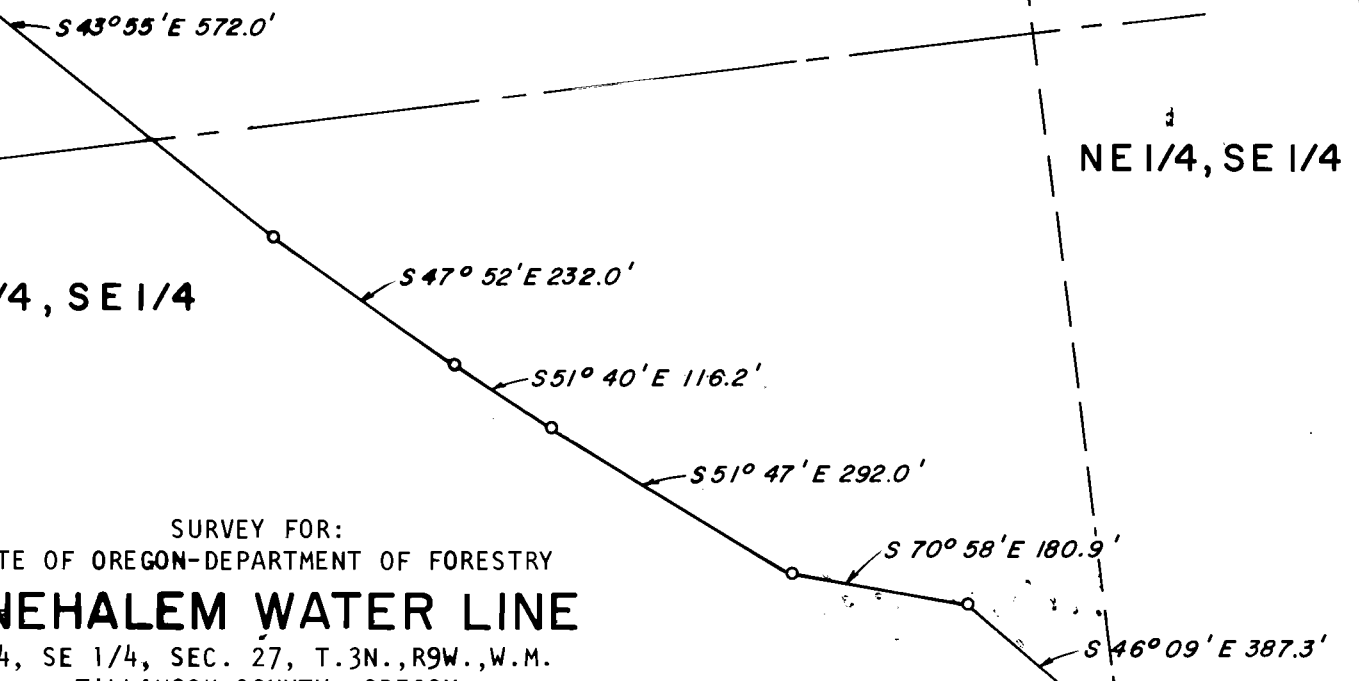
NW 1/4, SE 1/4

NE 1/4, SE 1/4

REGISTERED
 PROFESSIONAL
 LAND SURVEYOR
C. Wayne Cook
 OREGON
 JULY 22, 1977
 D. WAYNE COOK
 1098

SURVEY FOR:
 STATE OF OREGON-DEPARTMENT OF FORESTRY
CAMP NEHALEM WATER LINE
 NW 1/4, SE 1/4, SEC. 27, T.3N., R9W., W.M.
 TILLAMOOK COUNTY, OREGON
 TRANSIT AND TAPE SURVEY BY: C. W. COOK, K. D. WHITEHEAD
 B. HENDERSON
 DRAWN BY: K. D. WHITEHEAD
 MAY, 1977
 SCALE: 1" = 200'

Application No. 56584
 Permit No. 42692



CAMP NEHALEM
 (NOT TO SCALE)
 Crew House
 ELEV. 120'
 AC-112
 8-22-77
 M. STEVENS