

# Sweek Surface Water Application

T 2 N R 32 E W M

Sec. 21

SE 1/4

RECEIVED

JAN 3 1978

WATER RESOURCES DEPT.  
SALEM, OREGON



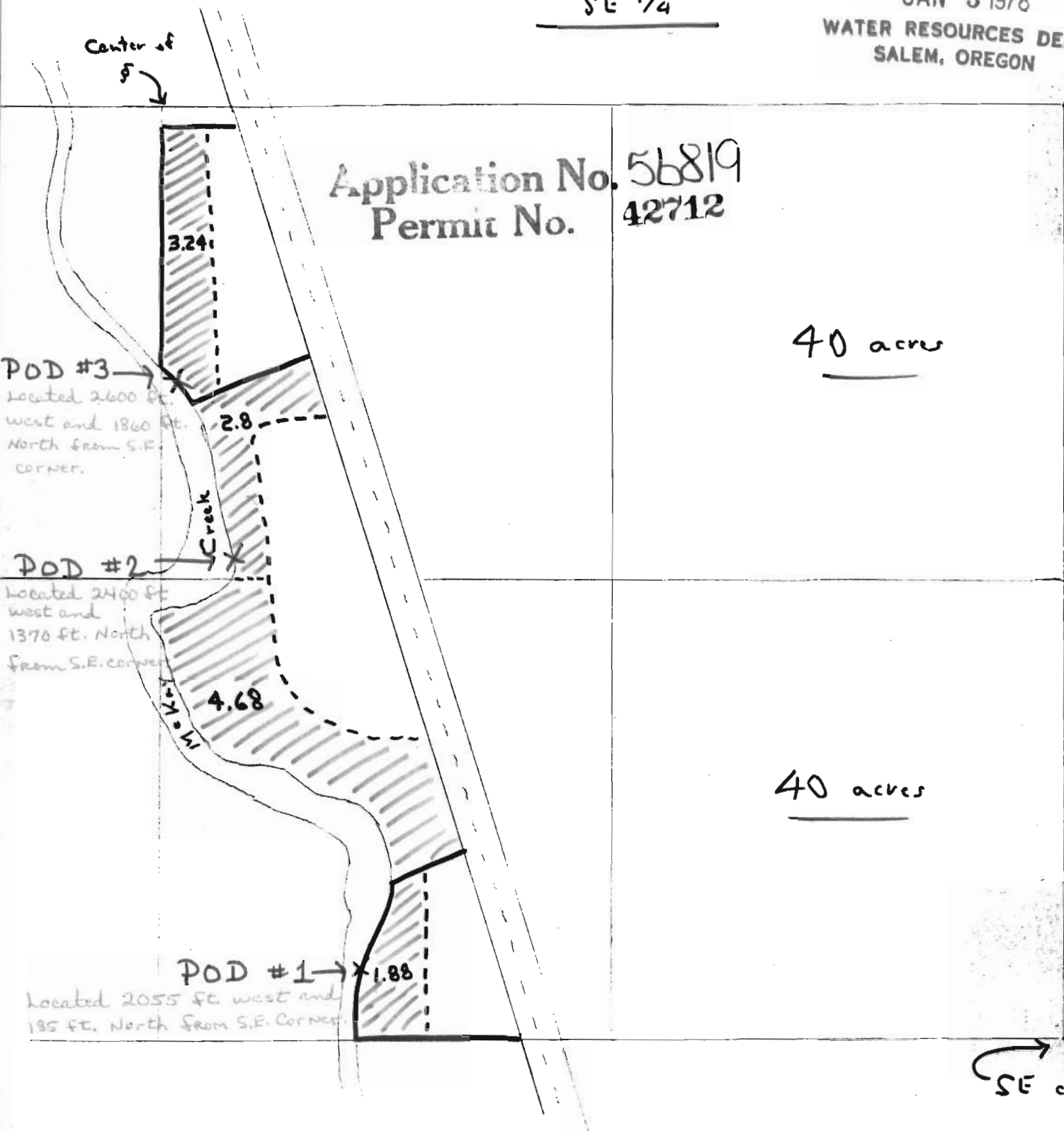
Center of  
S

Application No. 56819  
Permit No. 42712

40 acres

40 acres

SE corner



POD #3  
Located 2600 ft.  
west and 1860 ft.  
North from S.E.  
corner.

POD #2  
Located 2400 ft.  
west and  
1370 ft. North  
from S.E. corner

POD #1  
Located 2055 ft. west and  
185 ft. North from S.E. corner

RECEIVED  
1977  
WATER RESOURCES DEPT  
SALEM, OREGON

Scale  
1" : 400'