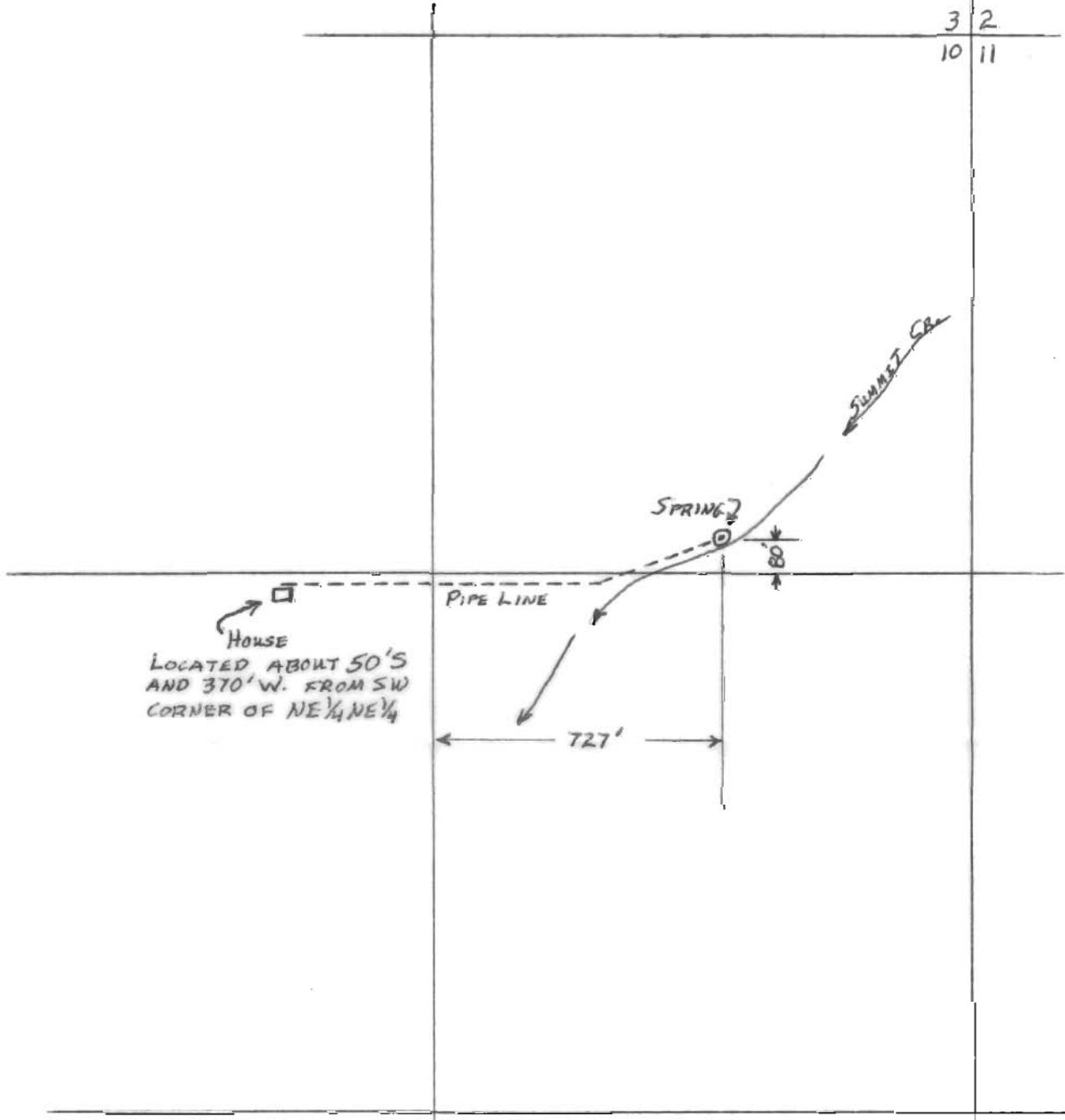


T. 9 S. R. 45 E. W. M.

3 2
10 11



THIS MAP PREPARED BY:

V. Post

FROM INFORMATION FURNISHED BY
THE APPLICANT.

SCALE: 1" = 400'

MAP TRACED FROM BAKER COUNTY
ASSESSORS MAP 9 45 10 & INDEX

Application No. 56872
Permit No. 42719

RECEIVED
MAY 11 1977
WATER RESOURCES DE
SALEM, OREGON