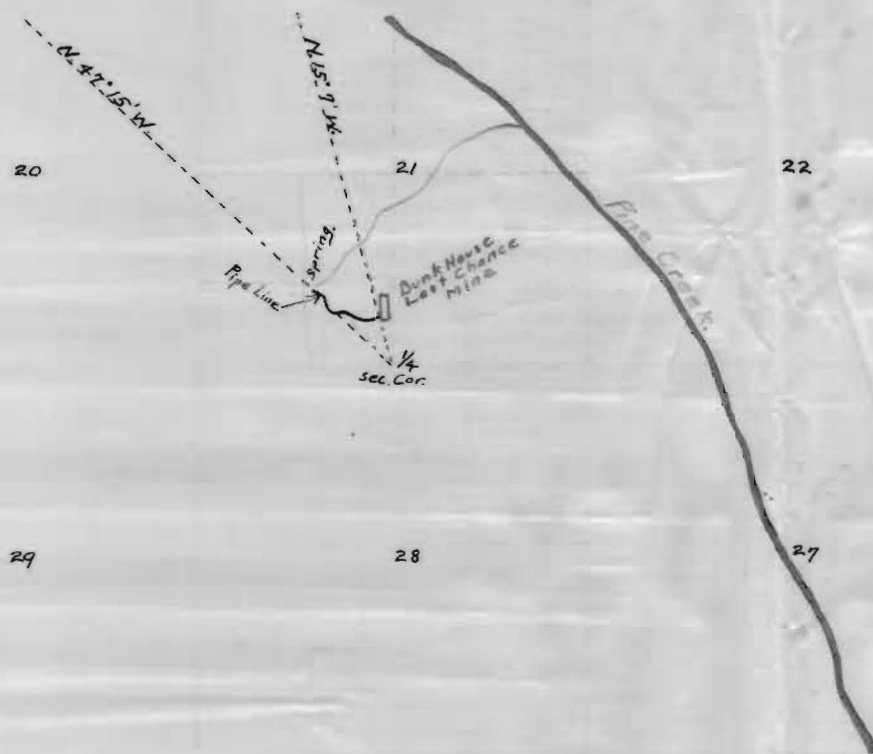


1875

1375

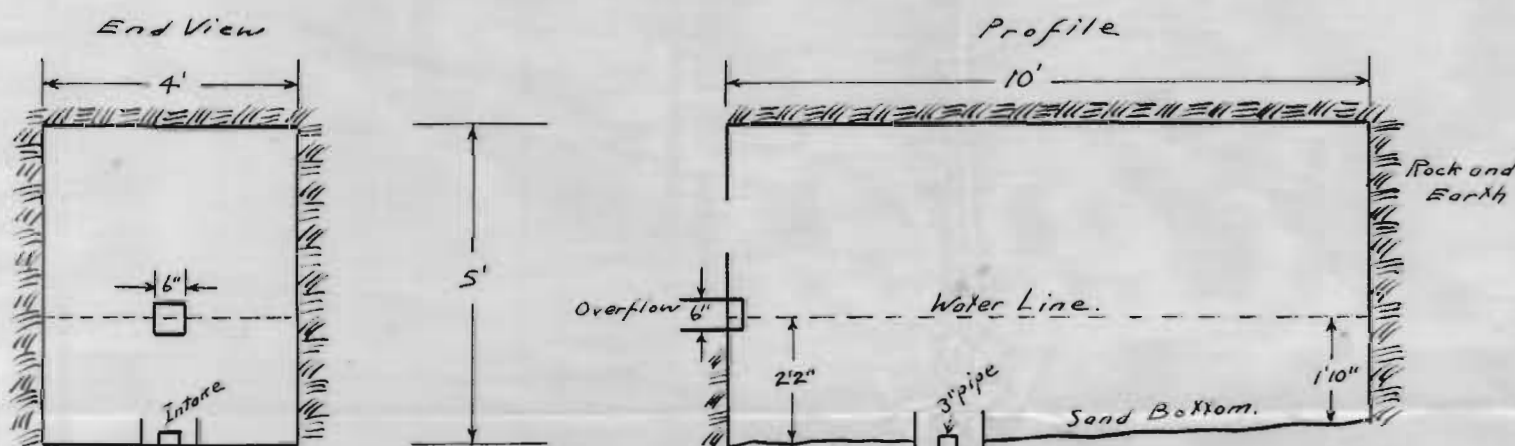
T. 6 S., R. 45 E., W.M.  
Scale 2" = 1 mi.



I, Sigurd W. Lagus, of Cornucopia Oregon do hereby certify that this map was made from notes taken during an actual survey made by me on August 6, 1919, and that it correctly represents the works described in the accompanying application.

Sigurd W. Lagus.

Pipe line terminal 690 ft from ¼ sec. Cor.  
Spring 1430 ft from ¼ sec. Cor.



Rectangular Wooden Reservoir.

Scale 1" = 3'

- Reservoir 10 ft long
- 5 " high
- 4 " wide
- 2 " average depth
- 80 cu. ft capacity
- Pipe line 3" pipe
- 1000 ft long
- Flow of water 0.21 cu. ft. per. sec.

Application No. 6781  
Permit No. 4293

OFFICE OF STATE ENGINEER  
RECEIVED  
SEP 26 1919  
SALEM, OREGON

1875