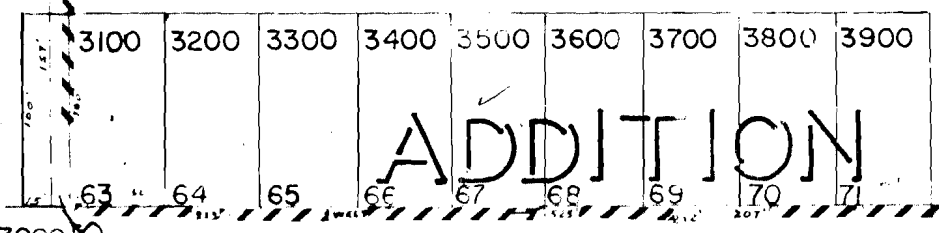


GEISLER

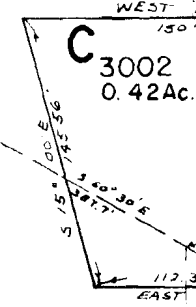
N.W. 3RD (GEISLER ST.) AVE.



ADDITION



T. 135. R. 31 E. SECTION 23 SW SW



4000 0.38 AC.

4004 0.27 AC.

4001 0.09 AC.

4700 0.13 AC.

4600

4500

4400

4200

APPLICATION MAP FOR HAROLD H. + EUNICE MERKLE

APPROVED

Harold H. Merkle
Eunice Merkle

SEE MAP 13 31 268B

Application No. **57083**

Permit No. **42932**

SCALE 1" = 100 FT.

RECEIVED
FEB 14 1978
WATER RESOURCES DEPT.
SALEM, OREGON

THIS MAP PREPARED BY:

Charles J. Cuff 2-8-78
FROM INFORMATION FURNISHED BY THE APPLICANT.

MANDARIN AVE.
CANTON
N.W.

SEE MAP 13 31 23CD

