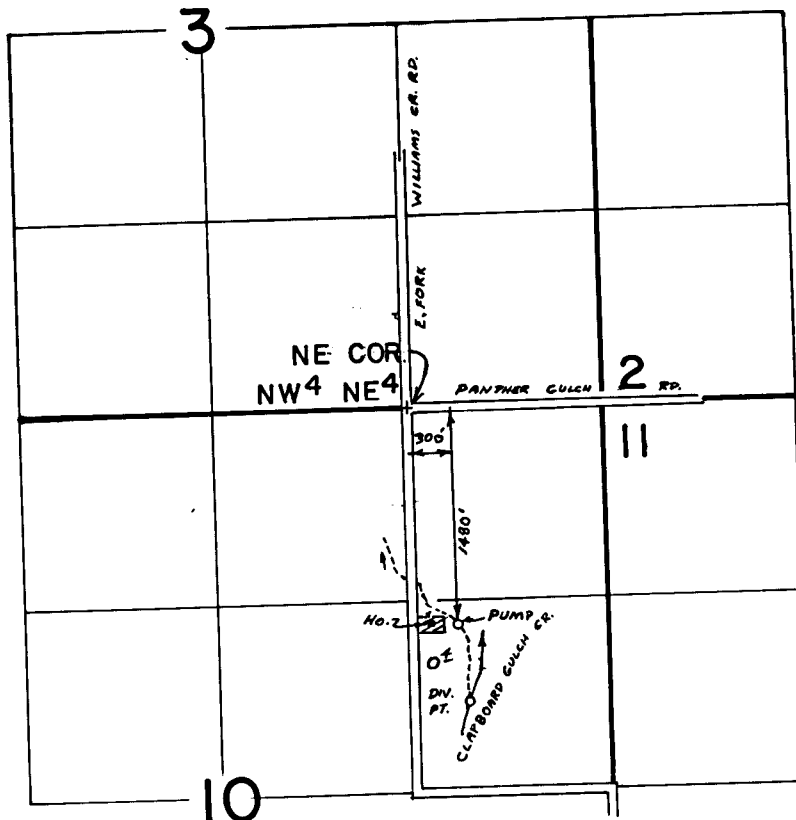


T. 39S., R. 5W., W.M.



DIV. PT. LOC. - 2030' S. & 350' E FROM NE COR.,  
NW. 1/4 NE 1/4, SEC. 10.

SCALE: 1" = 1320'

**FINAL PROOF SURVEY**  
UNDER

Application No. 5.70.99. Permit No. 4.29.52....  
IN NAME OF

..... **GEORGE BRETZ** .....

Surveyed Oct. 3, 1980, by Bruce R. Sund  
INSPECTION Aug 11, 1983 by B. Sue James

RECEIVED

DEC 17 1986

F.M. DIST. 14  
GRANTS PASS, CRE.

PTS-1979-14A  
PTS-1980-14B bs